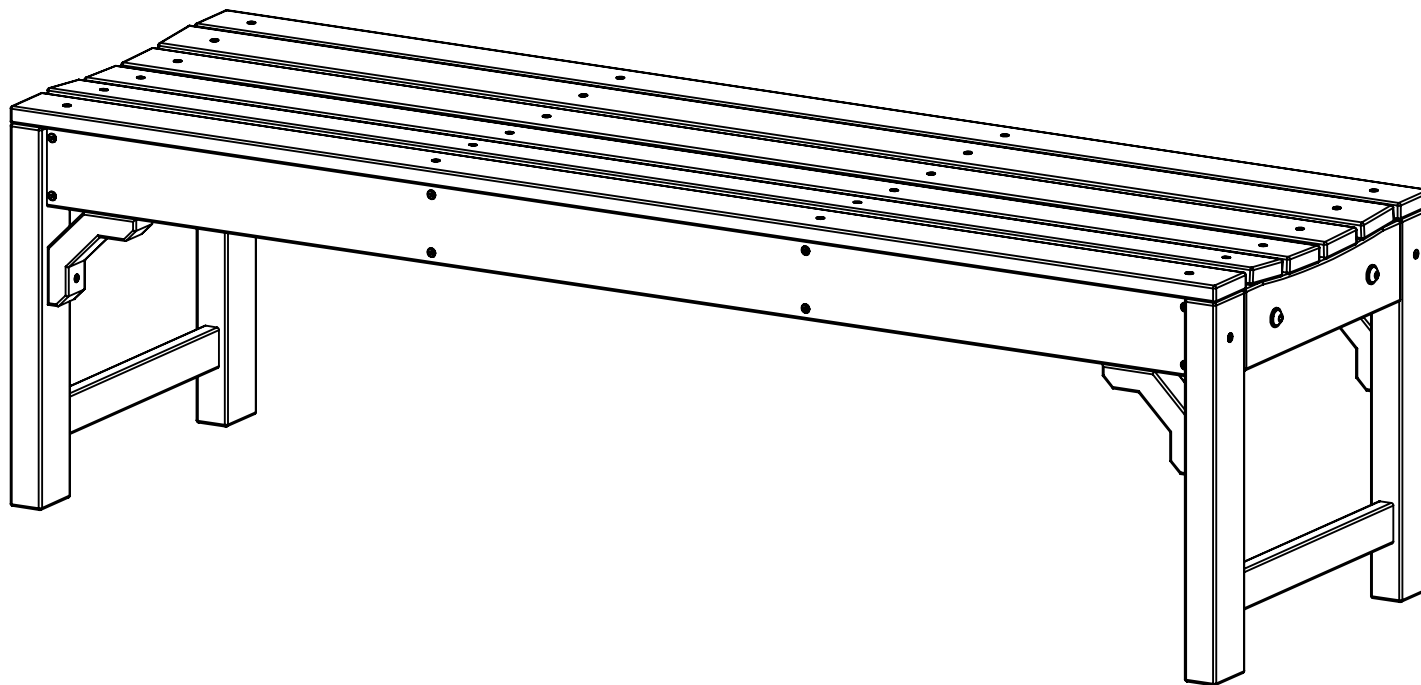
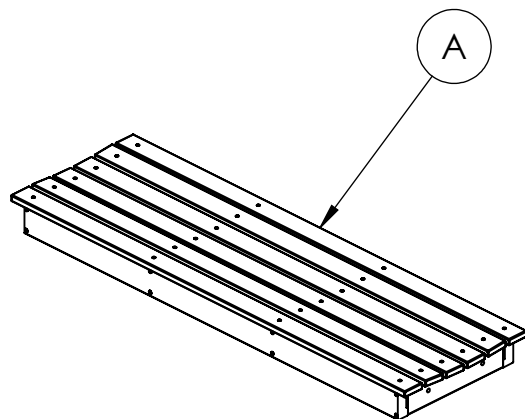


BENCH INSTRUCTIONS

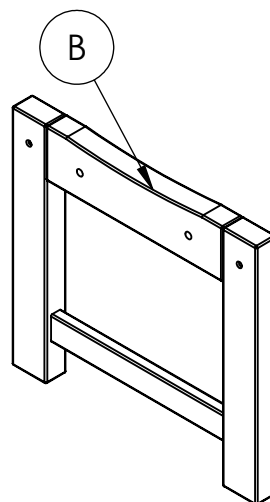
CF1005 REV# 2
9-12-2022



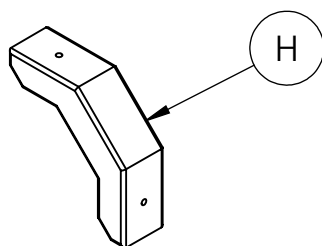
BENCH INSTRUCTIONS



1
Seat Assembly



2
Leg Assembly



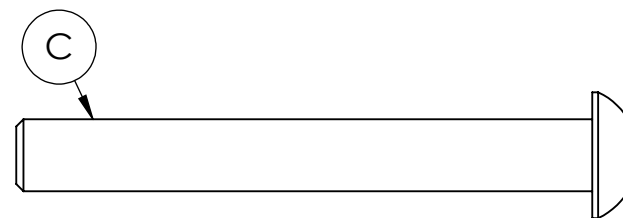
4
ANGLED GUSSETS

REQUIRED TOOLS (NOT INCLUDED)

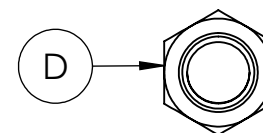
- POWER DRILL
- 7/32 ALLEN WRENCH
- 9/16 WRENCH
- #2 SQUARE DRIVE
- #2 PHILLIPS BIT

**NOTE: IT IS IMPORTANT TO KEEP ALL
SCREWS LOOSE DURING ASSEMBLY
UNTIL ENTIRE BENCH IS ASSEMBLED**

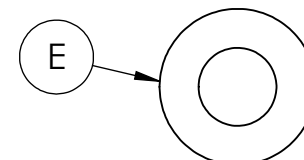
HARDWARE



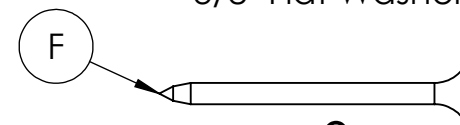
4
3/8" x 3" Button Head Cap Screws



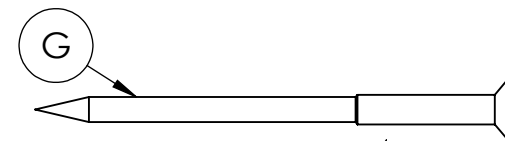
4
3/8" Hex Nuts



8
3/8" Flat Washer



8
#8 x 1.625" Flat Head Screw



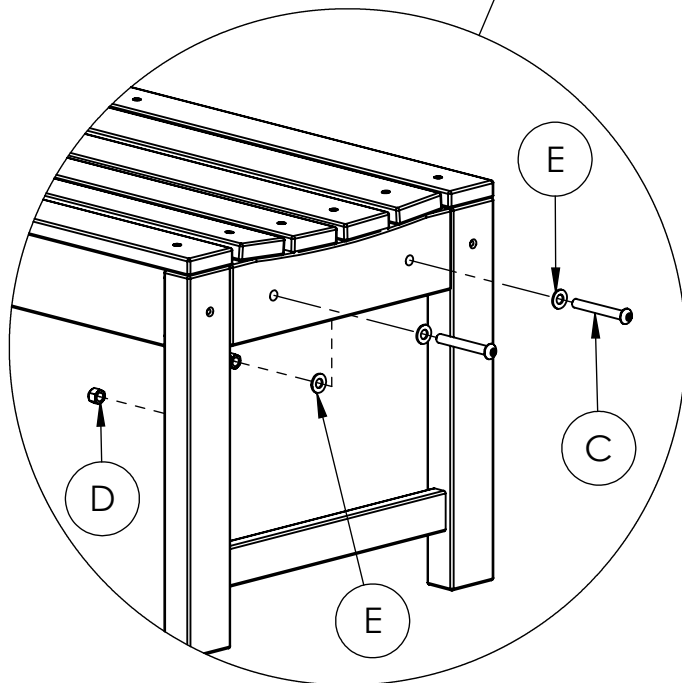
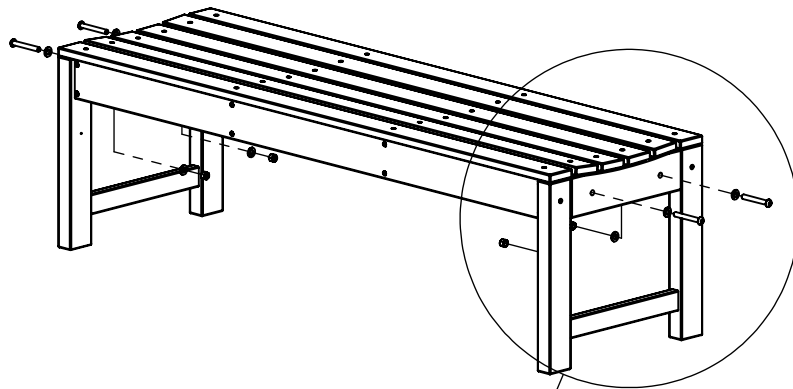
4
#10 x 2.5 Flat Head Screw

**HARDWARE &
TOOLS REQUIRED
FOR ASSEMBLY**

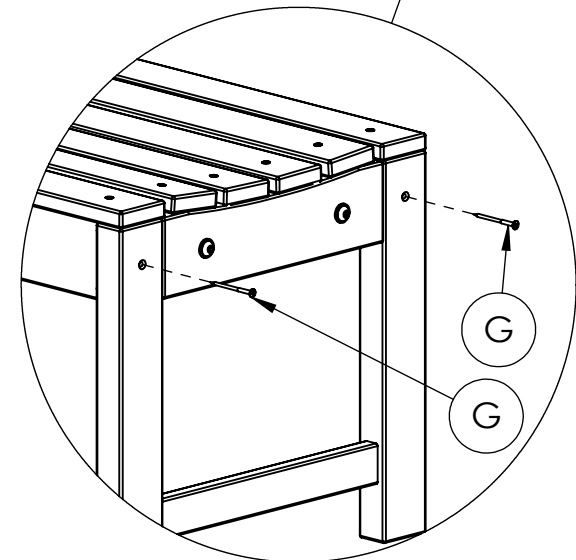
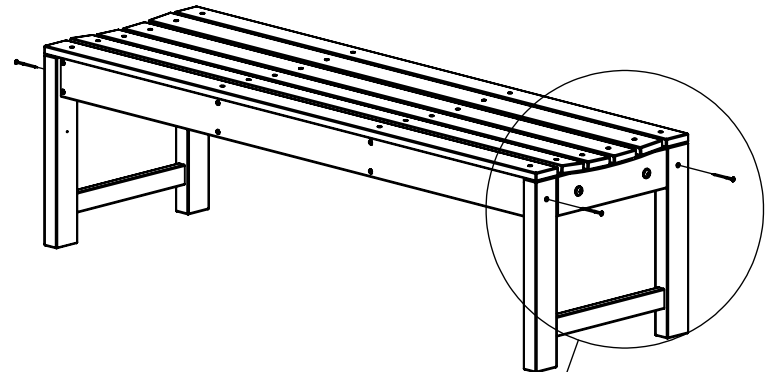
2/5

BENCH INSTRUCTIONS

STEP 1



STEP 2

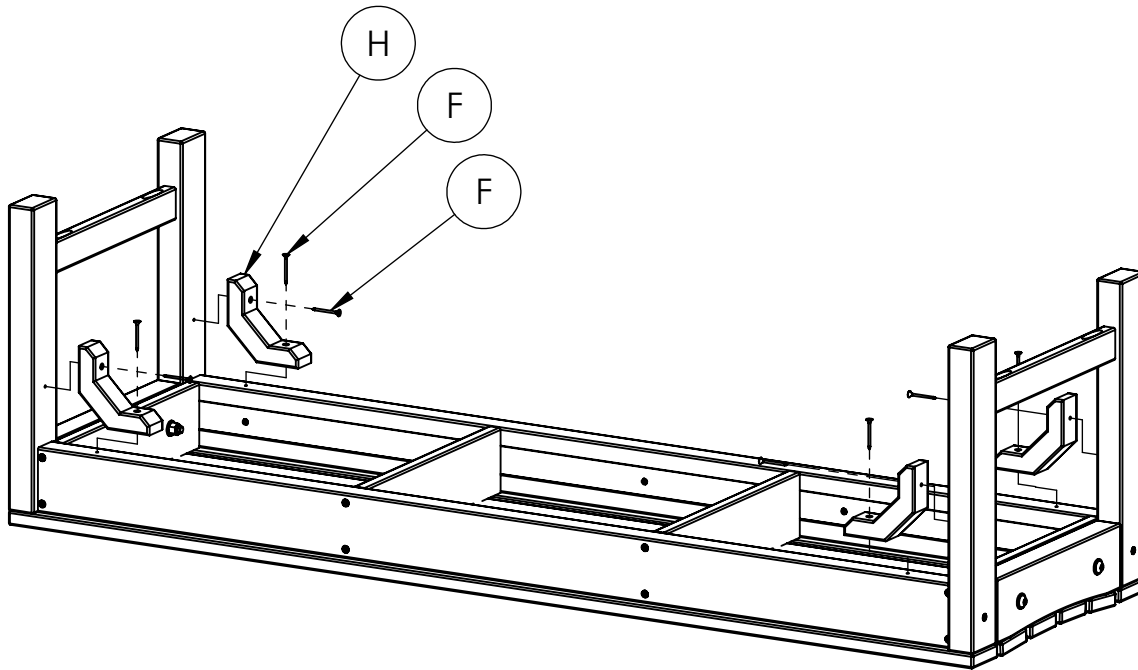


ASSEMBLY

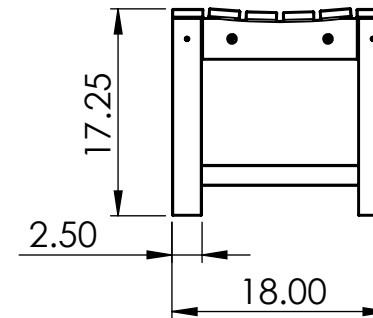
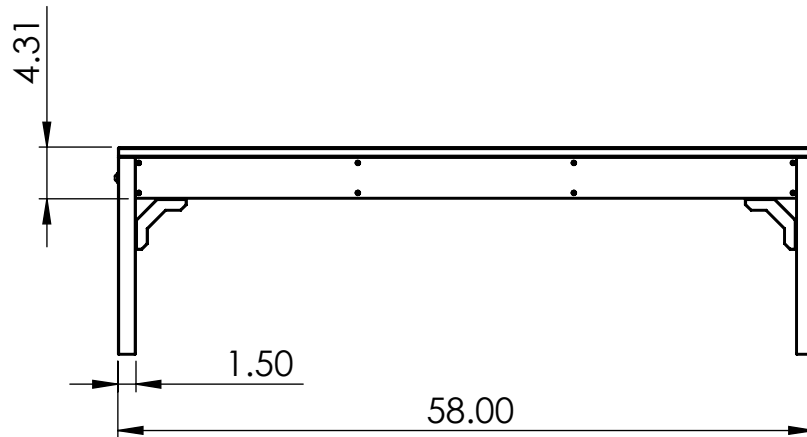
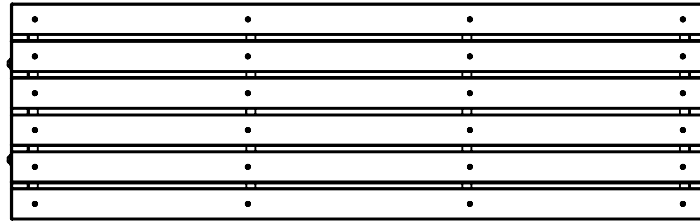
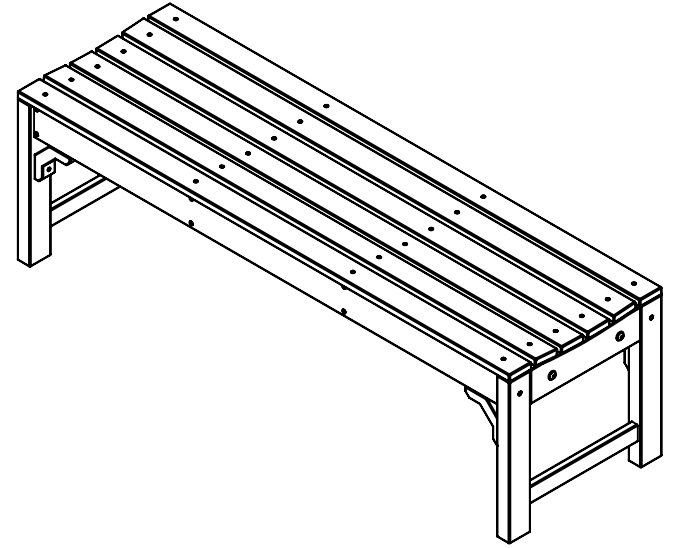
3/5

BENCH INSTRUCTIONS

STEP 3



BENCH SPECIFICATIONS



CONSTRUCTION MATERIALS:
Recycled Plastic
HARDWARE:
Stainless Steel

ALL DIMENSIONS SHOWN IN INCHES