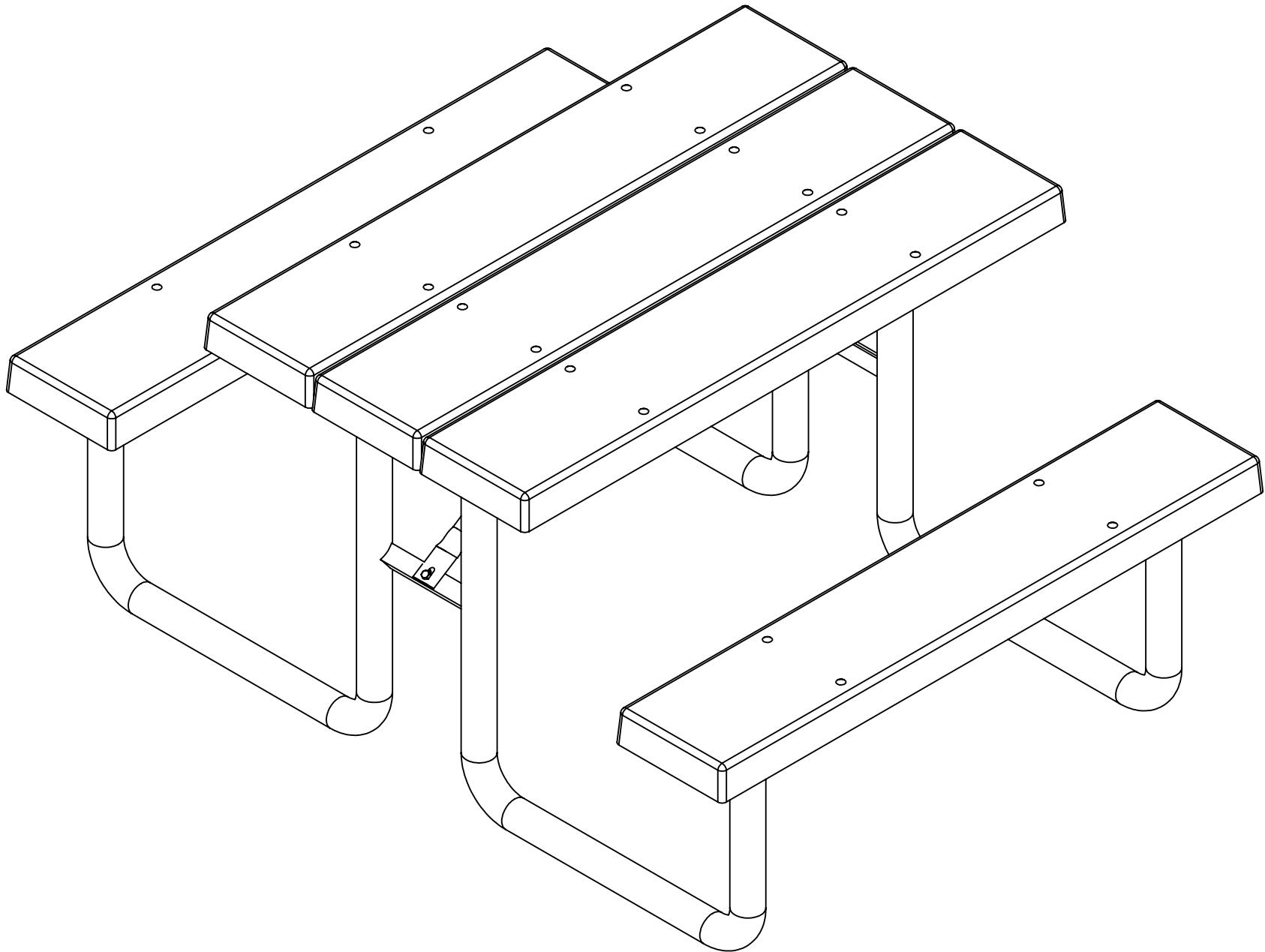
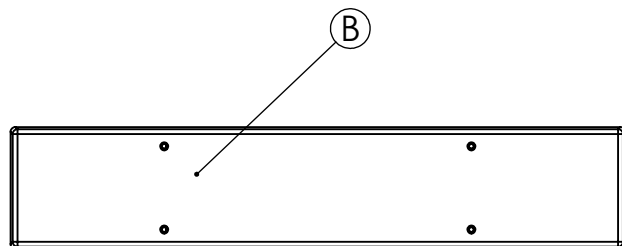


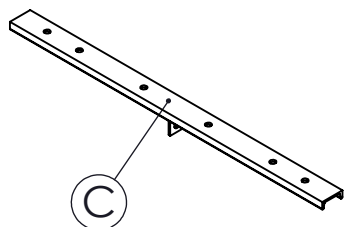
# KBM1204 INSTRUCTIONS



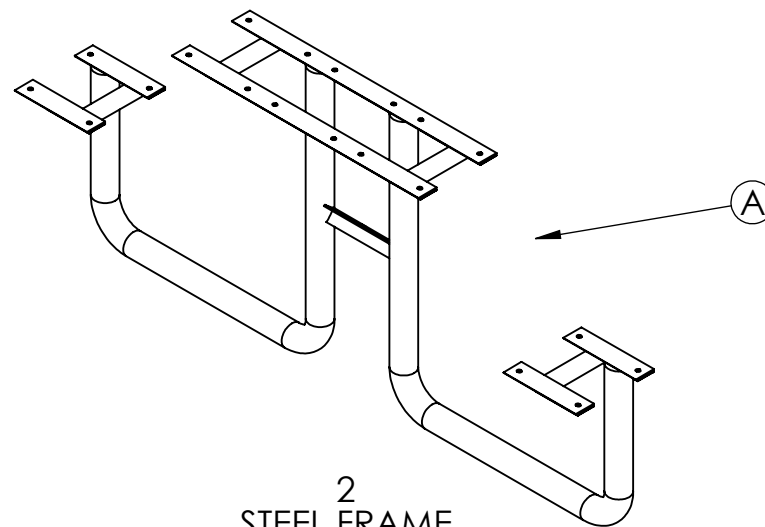
# KBM1204 INSTRUCTIONS



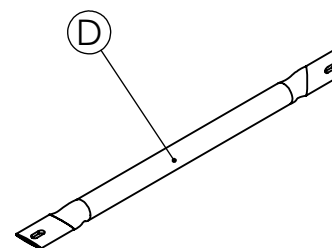
5  
PLASTIC BOARDS



1  
23" CENTER CHANNEL  
10089A



2  
STEEL FRAME  
10206-10218



2  
ANGLE SUPPORT BRACE  
10201-10203

## REQUIRED TOOLS (NOT INCLUDED)

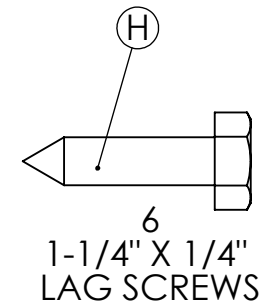
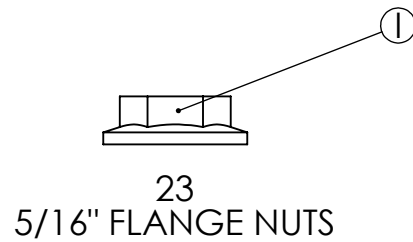
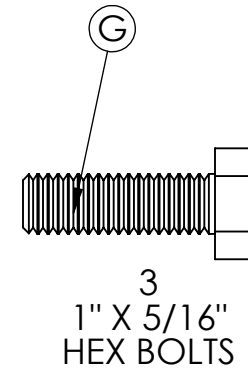
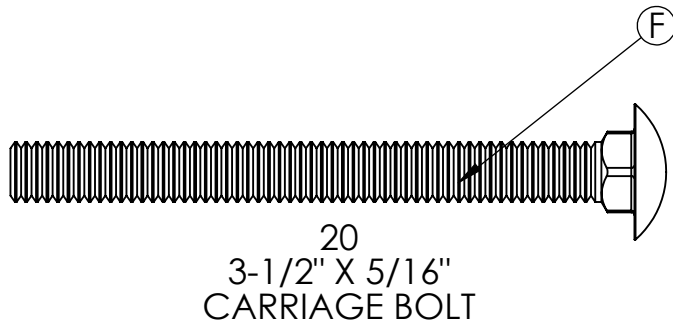
1 - 1/2" WRENCH  
1 - 1/2" SOCKET  
1 - 7/16" SOCKET  
1 - 1/8" DRILL BIT  
POWER DRILL

**NOTE: IT IS IMPORTANT TO KEEP ALL BOLTS FINGER TIGHT DURING ASSEMBLY UNTIL ENTIRE TABLE IS ASSEMBLED**

**HARDWARE &  
TOOLS REQUIRED  
FOR ASSEMBLY**

**2/6**

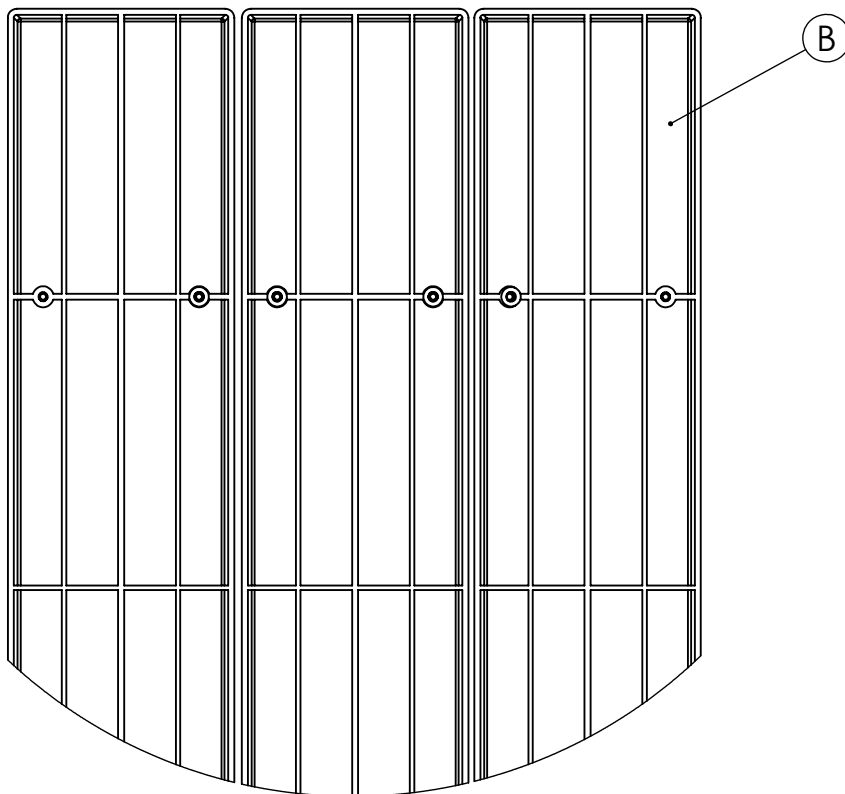
# KBM1204 INSTRUCTIONS



# KBM1204 INSTRUCTIONS

## STEP #1 Tabletop Assembly

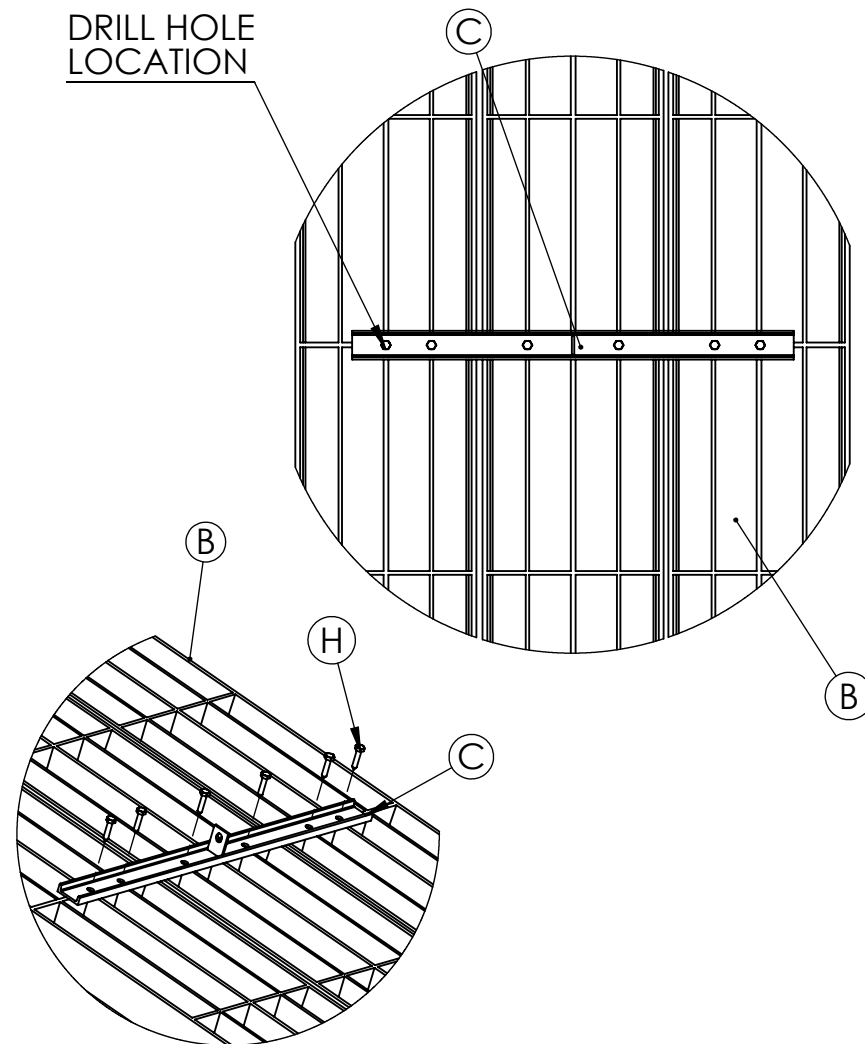
- Lay three boards (B) top side down on a flat clean surface
- Insert twelve 3-1/2" x 5/16" carriage bolts (F) into the holes from the top side so threads are showing



## STEP #2 Tabletop Assembly

- Lay the 23" center channel (C) in the center of the tabletop assembly
- Drill six additional 1/8" pilot holes 1/2" deep in the center of the cross section of the boards at the hole locations on the 23" channel
- With the six 1-1/4" x 1/4" lag screws (H), secure the 23" channel to the boards

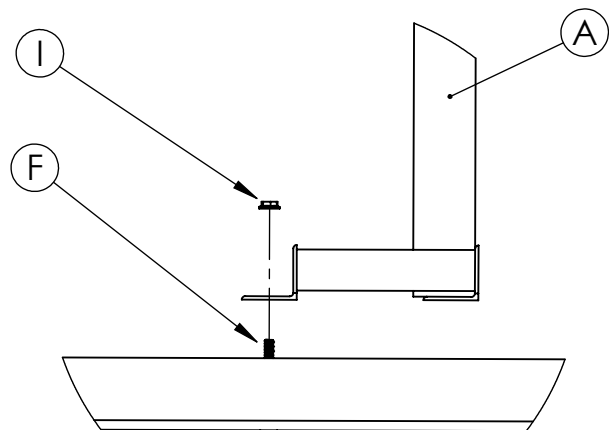
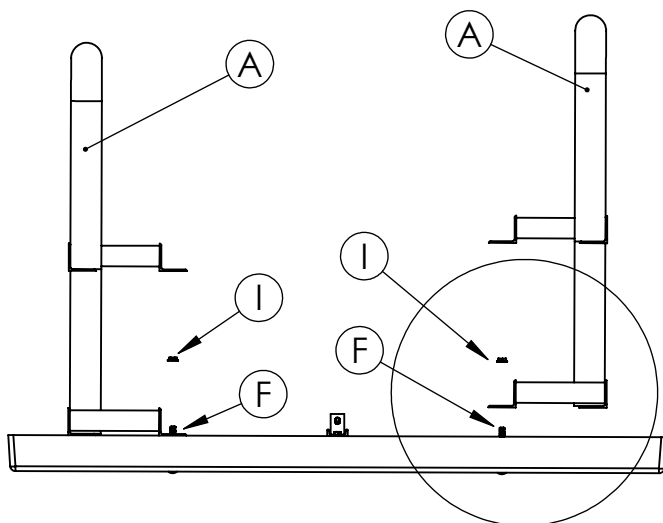
DRILL HOLE  
LOCATION



# KBM1204 INSTRUCTIONS

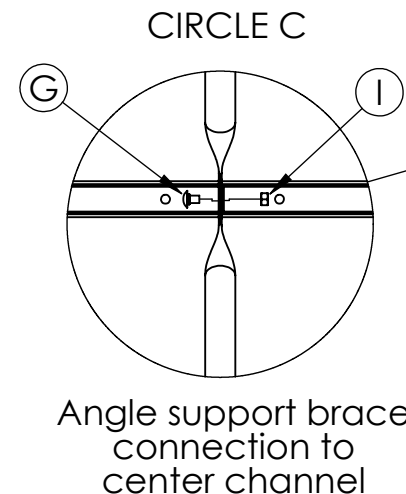
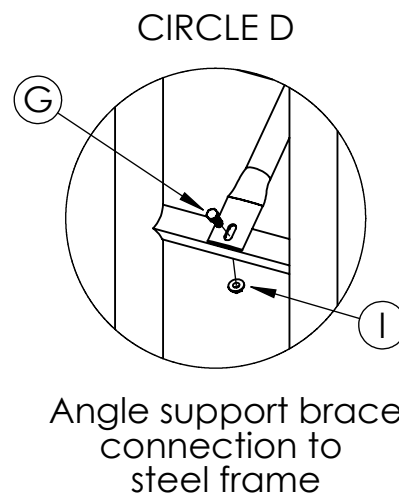
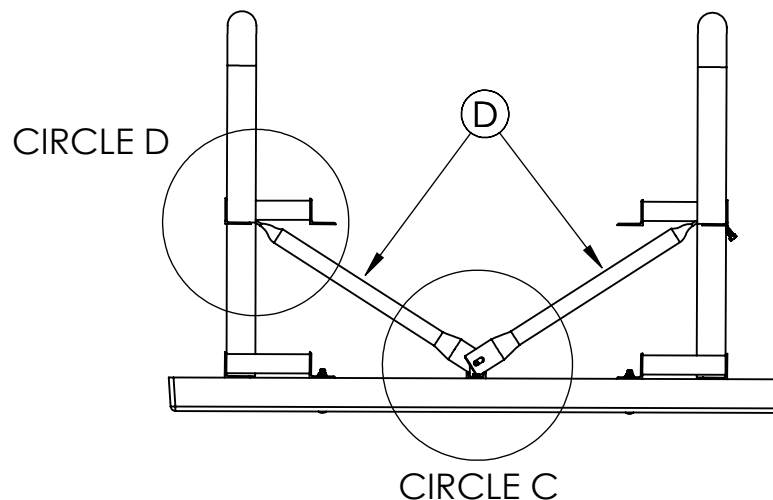
## STEP #3 Installing Steel Frames

- Flip the steel frames (A) upside down and onto the tabletop assembly of boards/center support
- Hand tighten the steel frames onto the boards with 3-1/2" x 5/16" carriage bolts (F) and 5/16" flange nuts (I)



## STEP #4 Installing Angle Support Brace

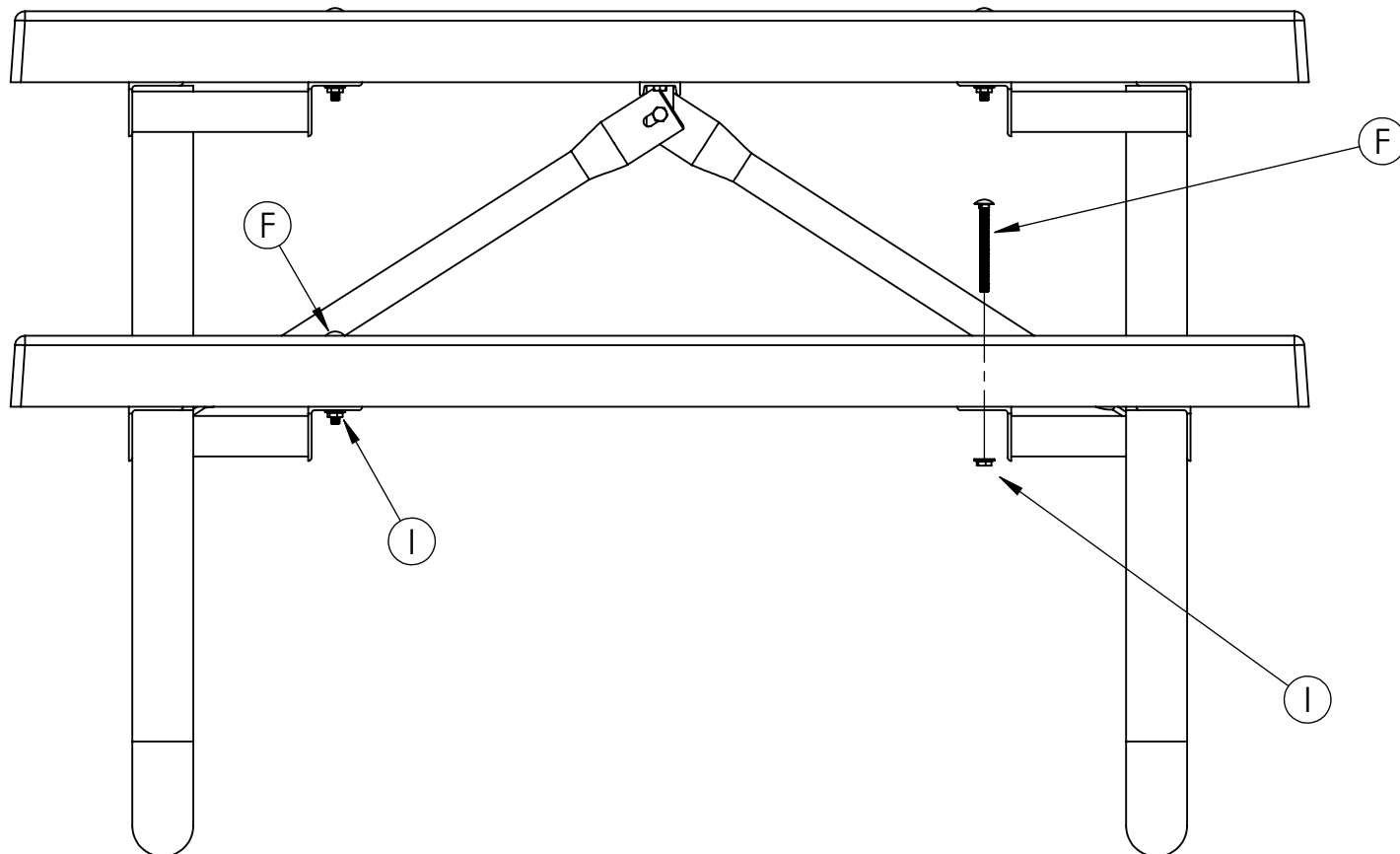
- Place a 5/16" x 1" hex bolt (G) through the two braces and 23" center channel then hand tighten with a flange nut (I). See CIRCLE C
- Attach the angle support braces (D) to the steel frames with 5/16" x 1" hex bolts (G). See CIRCLE D



# KBM1204 INSTRUCTIONS

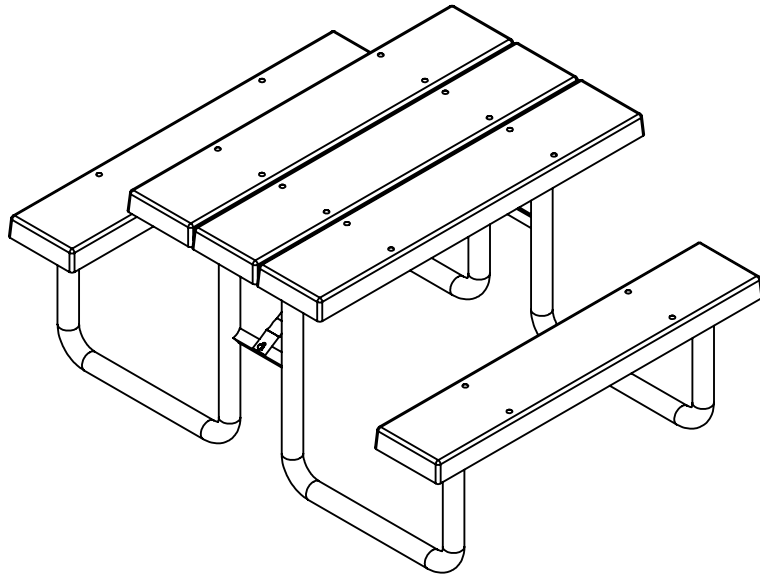
## STEP #5 Installing Seats

- With two people, carefully flip the table over.
- Place a board spanning the width of the two steel frame legs. Align the holes of the board with the steel flange.
- Place a 5/16" x 3-1/2" carriage bolt (F) through the holes on the board and the steel flanges. Secure with 5/16" flange nut (J).
- Repeat this step on the opposite seat area.
- Assure table legs are square and plastic boards are aligned with each other and tighten all bolts and nuts.

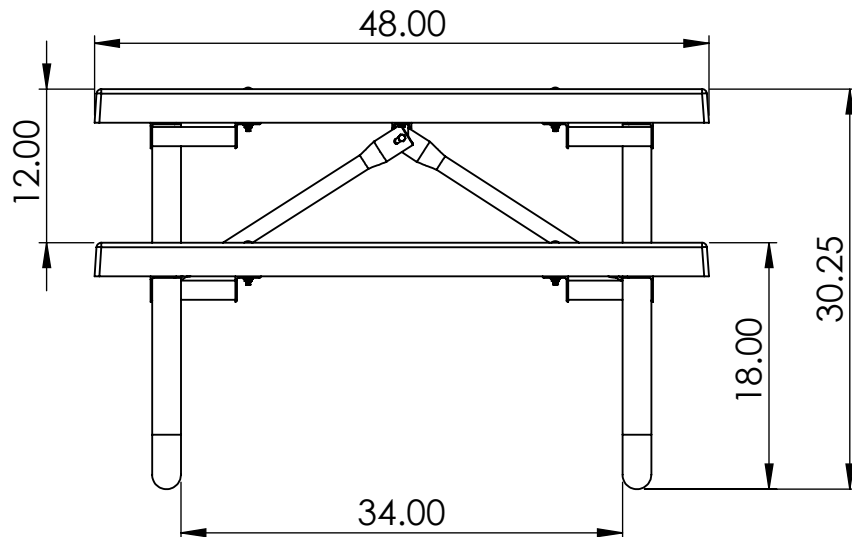


# KBM1204 SPECIFICATIONS

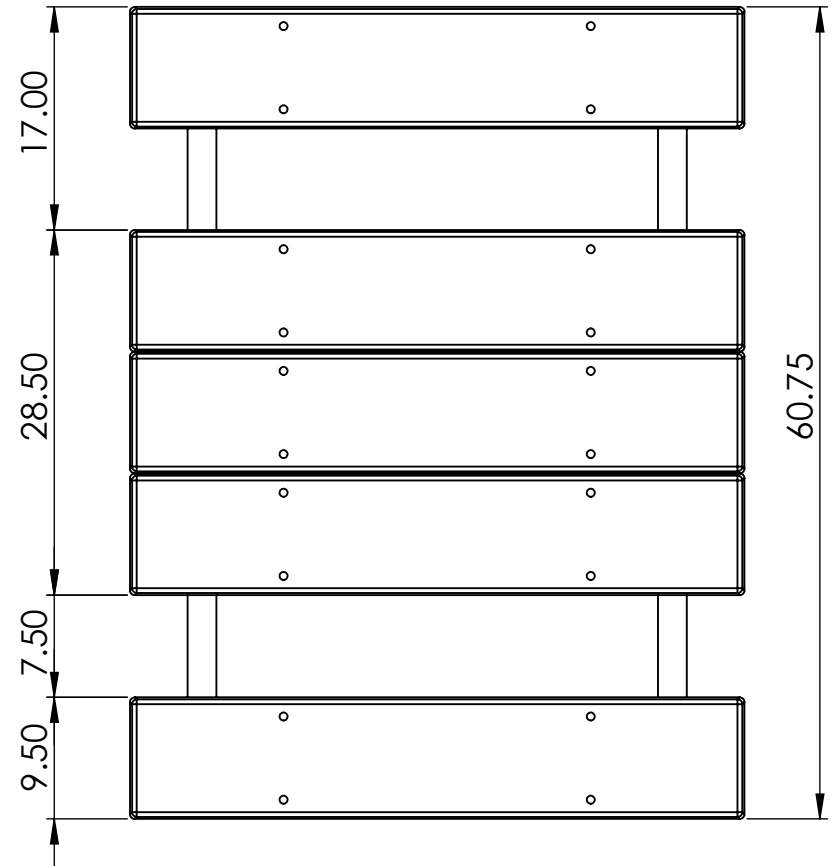
REV# 2  
4/22/2019



**SIDE**



**TOP**



ALL DIMENSIONS ARE SHOWN IN INCHES

# KBM1204 SPECIFICATIONS

MATERIALS: PLASTIC, POWDER COATED STEEL

| ITEM NUMBER | QTY. | DESCRIPTION               |
|-------------|------|---------------------------|
| A1          | 12   | 1.5" X 1.5" STEEL ANGLE   |
| A           | 4    | 1.5" OD STEEL TUBE        |
| D           | 2    | 16 GAUGE 1.25" STEEL TUBE |
| C           | 1    | 1" X .5" STEEL CHANNEL    |

