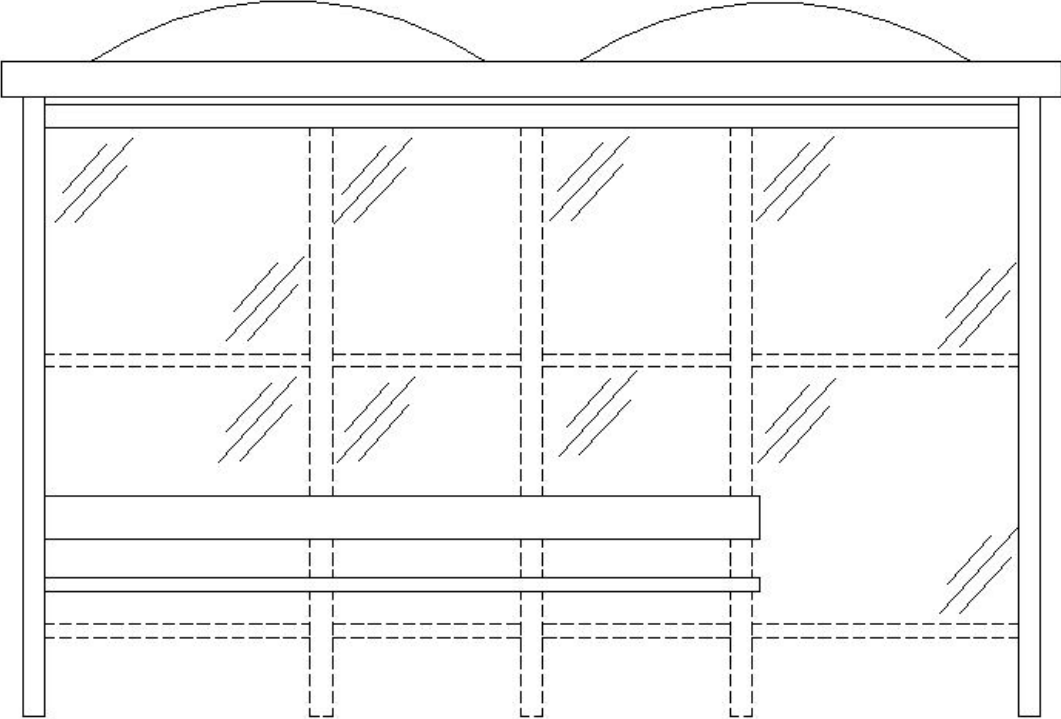
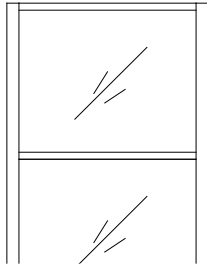

Installation Instructions

Prefabricated Shelter



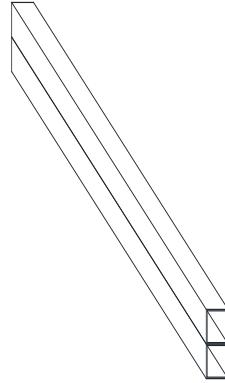
The Company tries to ensure that the shelter arrives to your location in excellent condition. If the product arrives damaged or parts are missing (or you need some installation assistance), please call Customer Service.

PARTS IDENTIFICATION

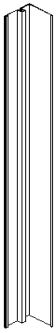


TYPICAL SHELTER
VENTED WALL SECTION

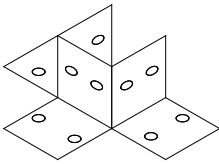
← WIDTH VARIES →



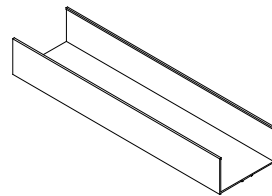
DOUBLE HEADER



HALF POST

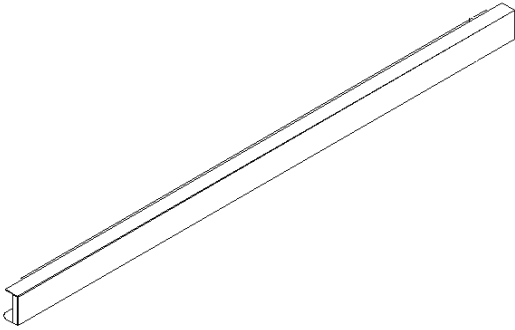


ANCHORING SHOE



U - CHANNEL

PART IDENTIFICATION (cont.)



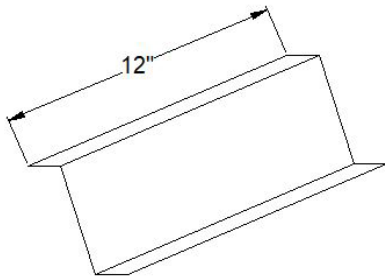
FASCIA / GUTTER SYSTEM



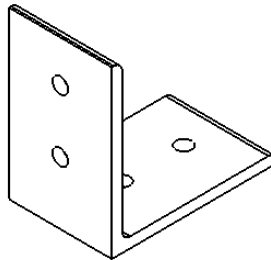
WEATHER TAPE



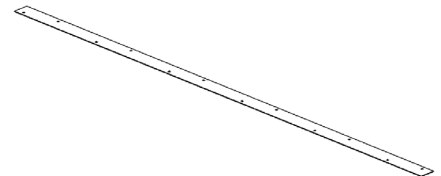
DOME ROOF



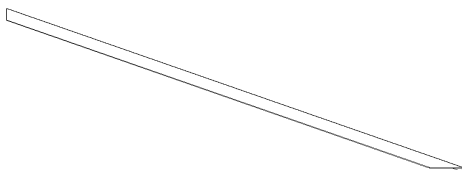
Z-BRACE



ANGLE CLIP



MIDDLE ROOF RETAINER

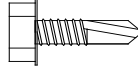


PERIMETER ROOF RETAINER

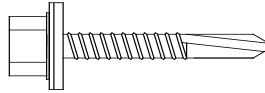
ADDITIONAL ITEMS:

- CAULK
- TOUCH UP PAINT

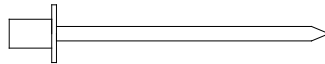
FASTENER IDENTIFICATION
FOR QUANTITY SEE SHIPPING LIST



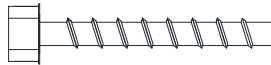
#10 x 3/4" HEX HEAD SELF DRILLING / TAPPING SCREW (COLOR OF SHELTER)



#12 X 1-1/4" HEX HEAD SELF DRILLING / TAPPING SCREW (GALV) WITH NEOPRENE WASHER AND WITHOUT WASHER



3/16" ALUMINUM POP RIVET



1/4" x 1 7/8" HILTI KWIK HUS EZ SCREW ANCHOR

Unpack all materials and verify quantities to the pack list provided before starting assembly. Consult Austin Mohawk if you have any questions or problems before or during installation or if optional features are not covered in these instructions.

Tools Required for Assembly

- 1.) Rubber mallet.
- 2.) Power screw gun with 5/16" & 1/4" & 7/16" nut driver bits.
- 3.) Pop rivet gun
- 4.) Power drill with a 1/8", 1/4", 3/8" drill bit and 3/16" drill bit (for optional bench).
- 5.) 25' tape measure.
- 6.) Steel claw hammer.
- 7.) Caulk gun (10.3 oz. tube size).
- 8.) Chalk line.
- 9.) Rotary hammer / masonry power drill with 1/4" masonry drill bit.
- 10.) Vise grips - C style with wide grip opening and end pads (clamp).
- 11.) 1-1/4" Hole saw.

Please read installation instructions thoroughly once prior to beginning installation. Call our Customer Service if you need clarification of these assembly instructions.

STEP 1

Shelter shall be installed on level flat ground with changes in elevation not to exceed 1" over the length of the shelter. Austin Mohawk recommends a 6" concrete slab as shown on the layout drawing. Layout shelter out to out dimensions taking care to ensure layout is square.

STEP 2

Unpack the wall sections from the crate.

See Figure 1 for entrance/exit assembly. Attach double header (with pre drilled holes toward inside of shelter) to c-connector with (1) #12 x 1-1/4" self tapping screw (no washer) thru pre-drilled hole of header (both ends). Both screws tighten thru c-connector inside of header.

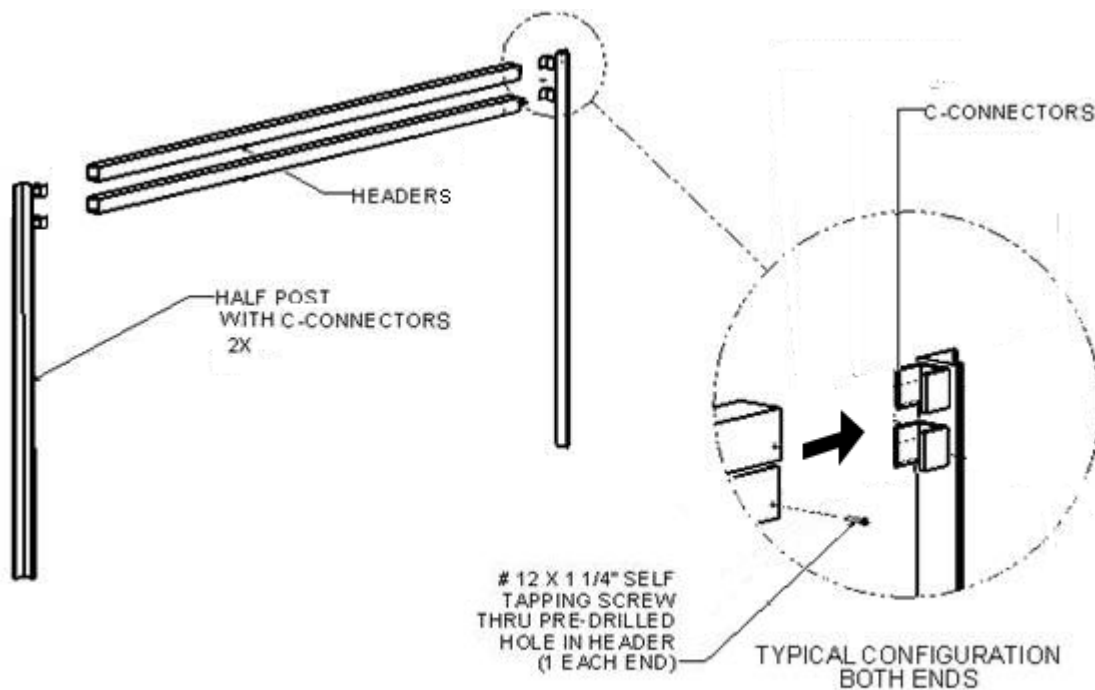


Figure 1

CAUTION: AS YOU ASSEMBLE THE SEQUENTIALLY NUMBERED PANELS BE SURE THE PANELS CREATE THE SHELTER ASSEMBLY PATTERN SHOWN IN FIGURE 2 BELOW. OPENING(S) MAY DIFFER FROM MODEL SHOWN. CHECK INSTALL LAYOUT FOR PANEL AND OPENING LOCATION(S).

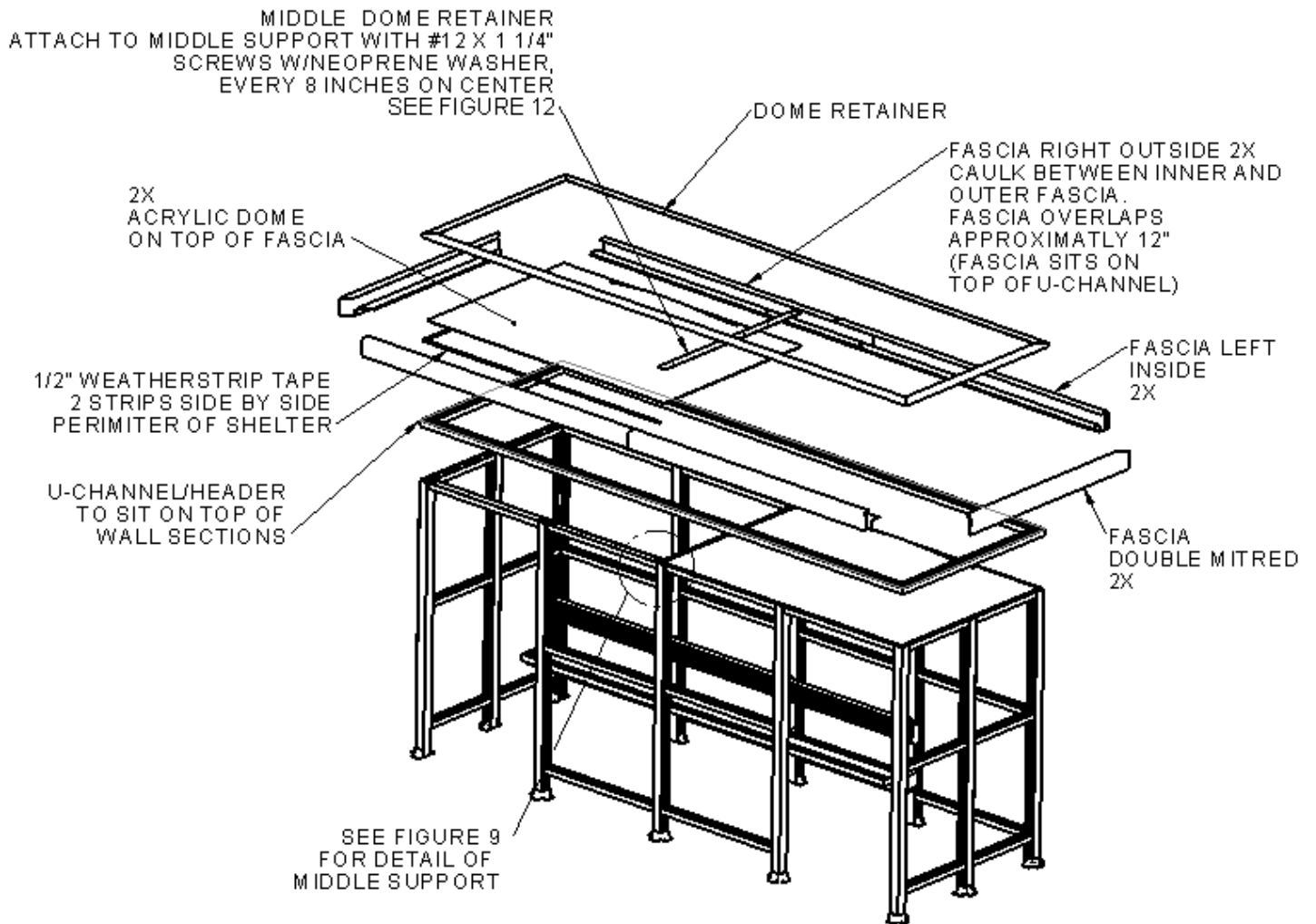


Figure 2
SHOWN WITH (2) OPENINGS
FULL OPEN AVAILABLE

STEP 3

Unpack the wall sections from the crate. Note that the wall sections are numbered, in sequence, starting at #1 and start at corner. See INSTALL LAYOUT.

Start with the #1 & #2 wall sections (they should make a corner connection). Stand up the Wall Sections #1 & #2 placing the corner posts male to female connections next to each other. Snap the two wall sections together by lightly hitting the sections at the connection point with a rubber mallet and continuing from the top to the bottom of the post. Proceed with the remaining wall sections in the same manner, continuing with the next appropriate number until all panels and entrance/exit assembly is complete. **Caution: Be certain wall sections are secured from falling over until shelter is fully anchored to concrete pad.**

STEP 4

After all the walls of the shelter are assembled, measure from corner to corner again to ensure the shelter is square. Adjust layout if necessary.

STEP 5

Anchor the shelter to the concrete pad. **See Figure 3. Prior to installing anchor boots the (4) holes for anchoring to concrete require reaming out to 3/8" dia hole.**

Fit the anchoring shoes around the exterior of each of the posts. Although six holes are provided in the anchor shoe, only 4 anchors per shoe are required. Mark the holes to be drilled in concrete pad using the anchor shoe as a template. Remove the anchor shoe and drill into the concrete pad. Be sure the holes are deep enough for the Hilti Anchors to anchor shelter properly. See Hilti anchor install attached.

Fit the anchoring shoes around the exterior of each of the posts and attach the shoes to the posts with the #10 x 3/4" hex head self tapping screws in the holes provided. Screw 1/4" x 1 7/8" Hilti Kwik Hus EZ anchors provided.

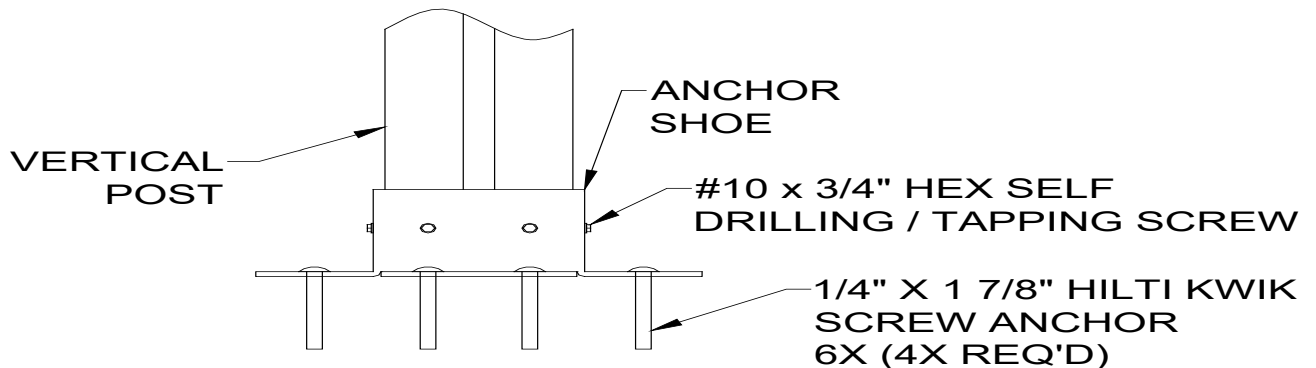


Figure 3

STEP 6

Install the U-channel on top of the wall sections. **See Figure 4A** for layout. Attach U-channel to top of wall sections on the inside only with #10x3/4" self tapping screws, 12" on center. **See Figure 4B.**

Figure 4A

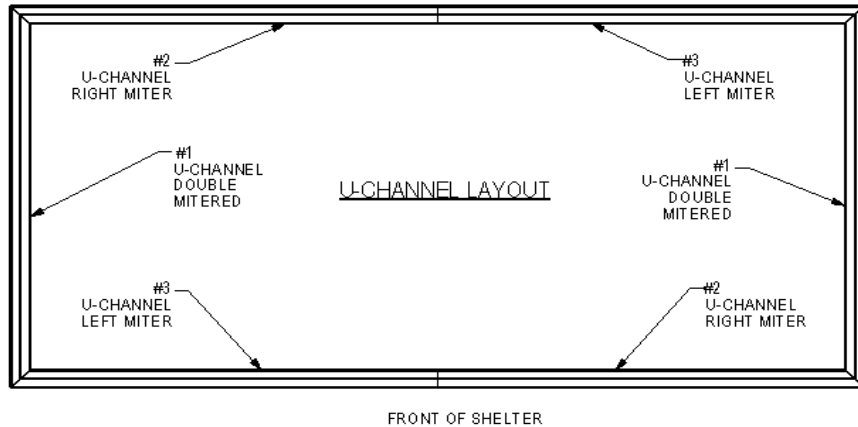
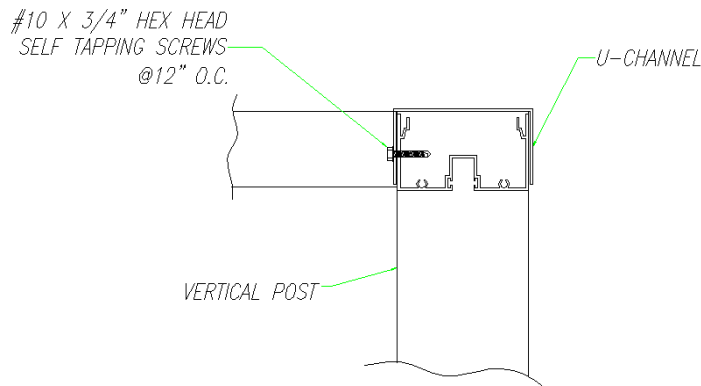


Figure 4B



STEP 7

Install the roof support tubes (qty-1) **See Figure 5.**

Locate the angle clips flush with the ends of the roof support tube, 2 angles per end. Attach the Angle clips to the roof support tube using #10 x 3/4" self tapping screws, 2 per angle.

Locate the center of vertical posts and attach the roof support tube (with angle clips attached) in the center of vertical wall posts.

CAUTION: Roof Support Tube must be in line with vertical posts so that the dome roof panels join together (1/2" space between flanges) on center of the roof support tube, (See step 10, Figure 9).

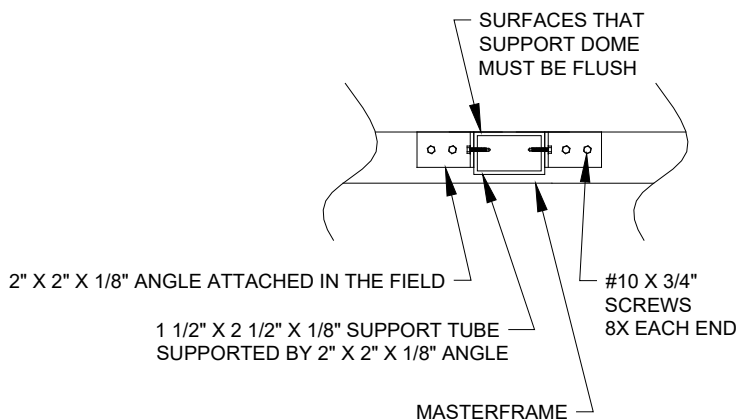


Figure 5

STEP 7 – Fascia Install

Step A - Strip off the protective plastic on the finished side of the fascia. The fascia/gutter system is placed on top of the u-channel with the large opening of the gutter facing the exterior of the shelter. (See **Step 8, Figure 7**).

Step B - Start at a corner and align and support (2) pieces of the fascia/gutter system. Be sure that the outside face of the fascia is level before attaching as shown in step 8, figure 7 below. When attaching the corners of the fascia, be sure the outside faces are aligned with each other in both directions. Fasten the fascia/gutter to the z-braces using #10 x 3/4" tek screws with neoprene washers every 12 inches on center.

Note: The vertical returns on the fascia ends must be inside the mitered fascia corner. Drill 3/16" diameter holes through the face of the double mitered fascia and the vertical return of the double return section, Drill 2 holes per corner. Fasten with 3/16" aluminum pop rivets, 2 per corner. Repeat the process for the other side. See **Figure 6** below.

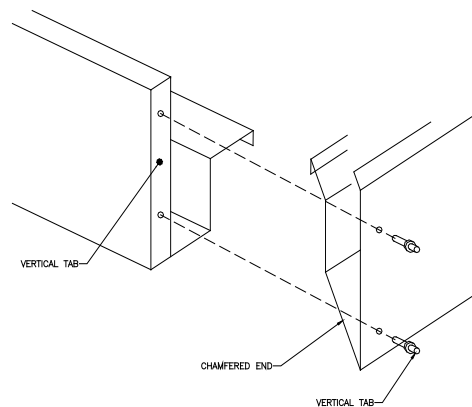


Figure 6

STEP 8

Install the 2 dome roofs. **See Figure 7.**

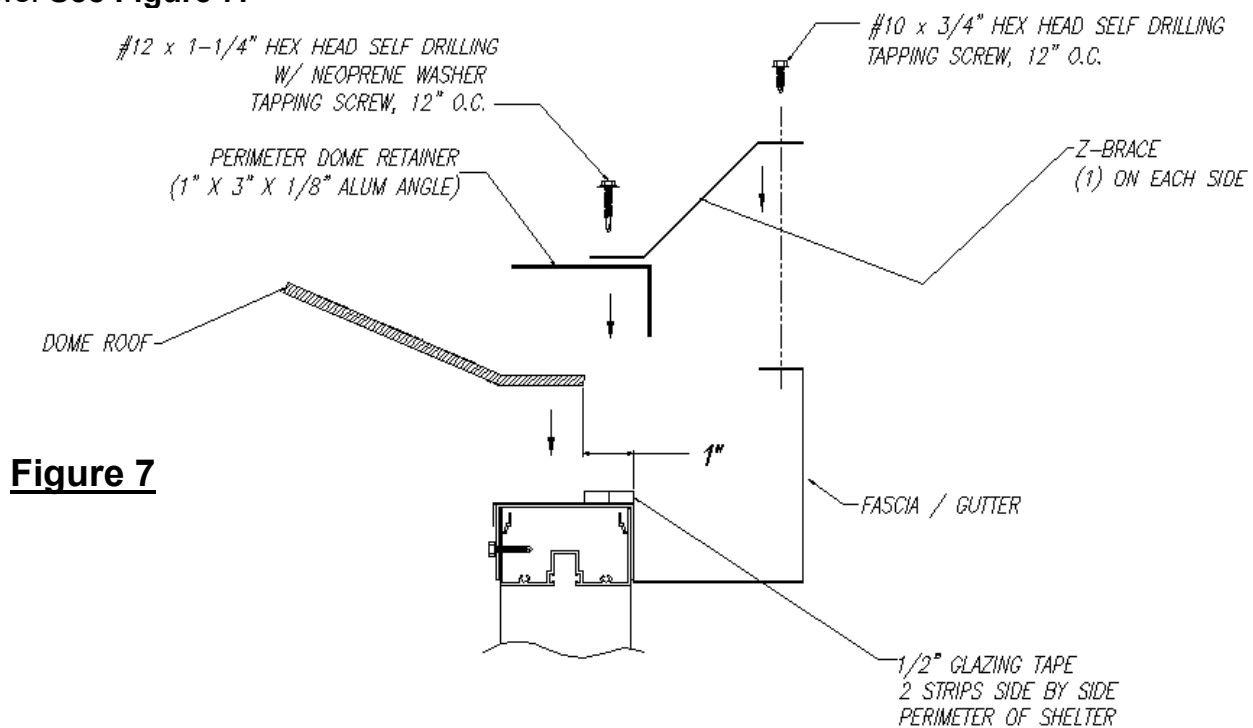
Place the dome roofs on top of fascia/gutter leaving a 1" space between the outside perimeter of the dome and the outside perimeter of the shelter. Space between domes flanges should be 1/2". **See Figure 7 and 9.**

Place 1 layer of glazing tape (2 strips side by side) in the gap between the perimeter of the shelter and the edge of dome. **See Figure 7.**

Install the perimeter dome retainer (1" x 3" x 1/8" alum angle) around the perimeter of the shelter using #12 x 1-1/4" hex head with neoprene washer self tapping screws, 12" on center. **See Figure 7.**

Fasten the (6) Z braces, (1) on each 5' or 6' side and three on each 12' side, spaced equally apart, to the top of the perimeter dome retainer, using (2) #12 x 1-1/4" hex head with neoprene washer self tapping screws. **See Figure 7.**

Fasten the Z braces to the top of fascia/gutter system using (3) #10 x 3/4" hex head self tapping screws. **See Figure 7.**



CAUTION: DO NOT SCREW INTO DOME ROOF

STEP 9

IMPORTANT: TO PREVENT LEAKS

Caulk between aluminum angle and dome roof. **See Figure 8.**

From the inside of the fascia/gutter caulk fascia seams at the corners and the telescoping joints.

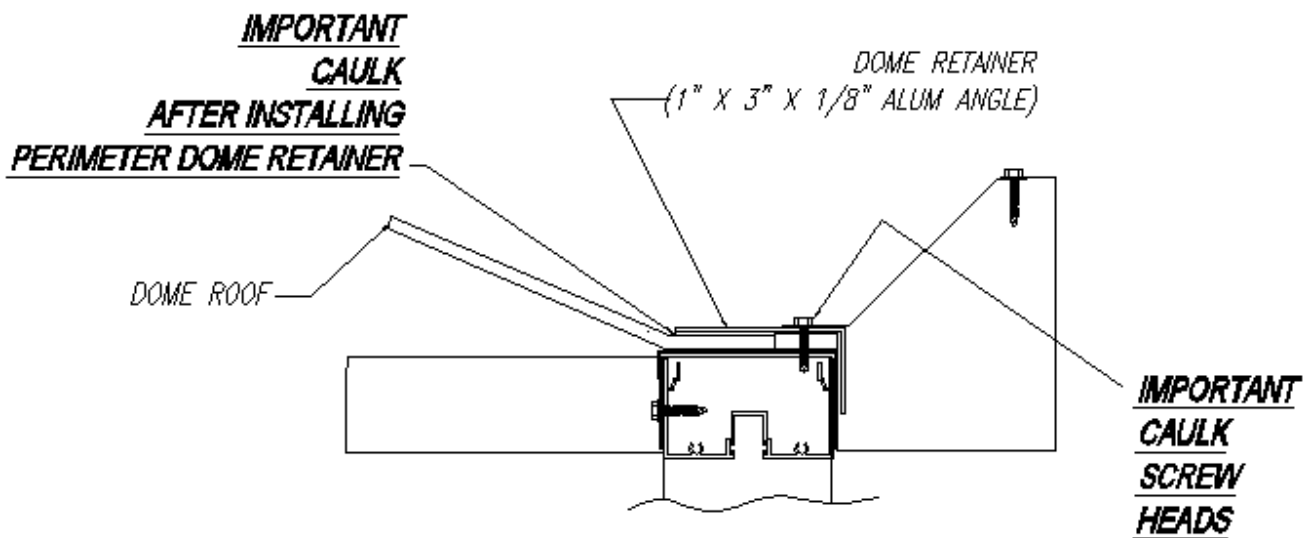


Figure 8

STEP 10

Install the middle dome retainer. **See Figure 9.**

Run 2 layers of glazing tape (1 on top of the other) in the gap between domes. Run 1 layer of glazing tape on the center flange of each dome.

Attach middle dome retainer (3" wide) on top of the dome flanges on the center support using 1 1/4" hex head self tapping screws w/ neoprene washer, 8" on center.

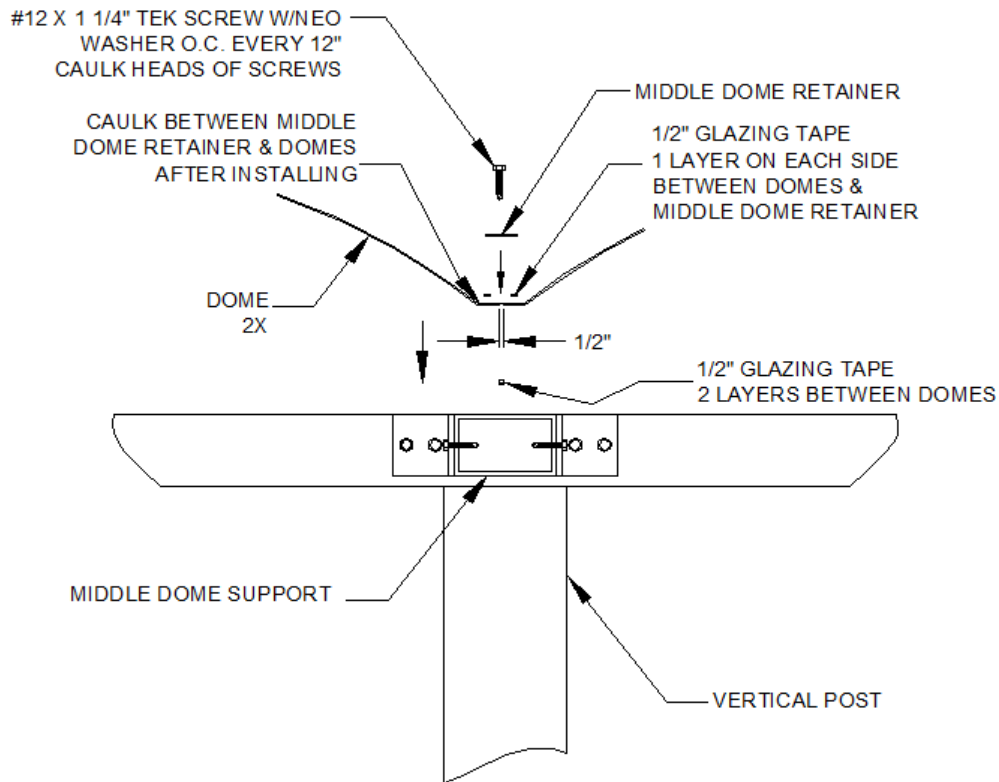


Figure 9

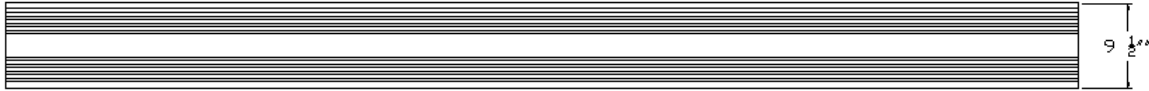
STEP 11

With a 1-1/4" hole saw, drill four total, 1 1/4" diameter weep holes centered in fascia gutter 4" from each corner. For best results drill weep holes away from entranceway(s). Actual location may vary based on site location.

BENCH PARTS IDENTIFICATION



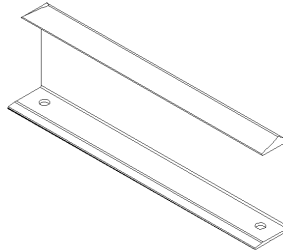
BACKREST – QTY: (SEE SHIP LIST)



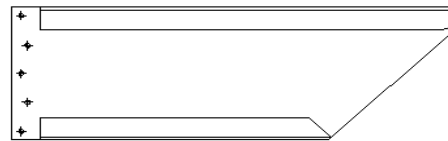
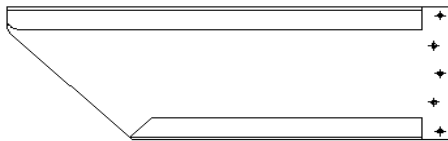
BENCH – QTY: (SEE SHIP LIST)



BACKREST BRACKET
QTY: (SEE SHIP LIST)

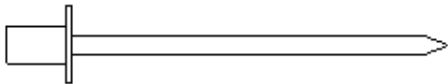


END CAP
QTY: (SEE SHIP LIST)

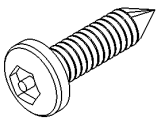


BENCH SUPPORT LH – QTY: (SEE SHIP LIST)

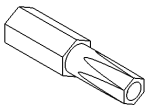
BENCH SUPPORT RH – QTY: (SEE SHIP LIST)



3/16" ALUMINUM POP RIVETS



1/4" X 1" STAINLESS STEEL SELF TAPPING SECURITY SCREWS



30 6 LOBE SECURITY DRIVER BIT

STEP A.

Installation of the bench.

- A. Drill 3/16" diameter holes through 9 1/2" bench and 6" backrest using predrilled holes in end cap as guide, 2 per end cap. **See Figure 1**
- B. Secure end caps to bench and back rest with 3/16" pop rivets. (2 per end Cap)

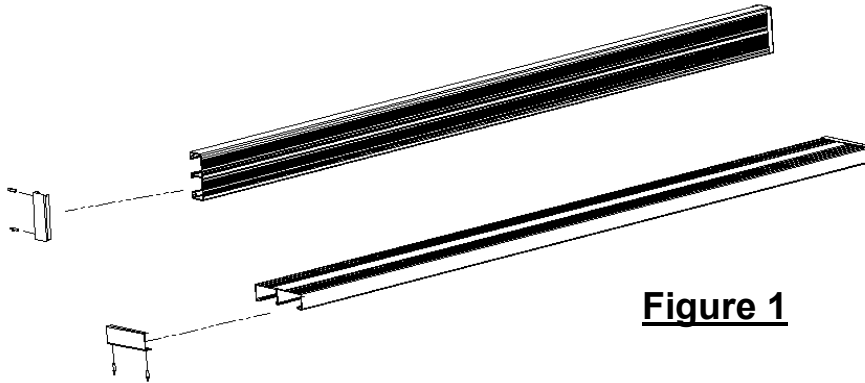


Figure 1

Locate bench supports on posts. **See Figure 2.** Note orientation of support at corner. **See Figure 2, Detail A.** Supports must be level, one to another. Using # 30 6 lobe security driver bit provided, secure bench supports to posts with 1/4" stainless steel self tapping security screws, 5 per bench support.

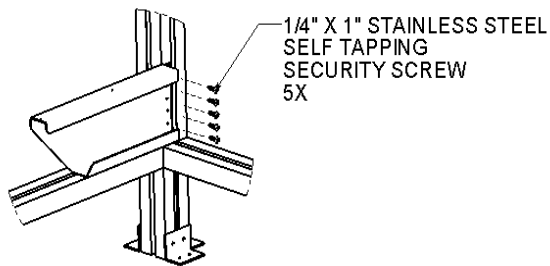


Figure 2 Detail A

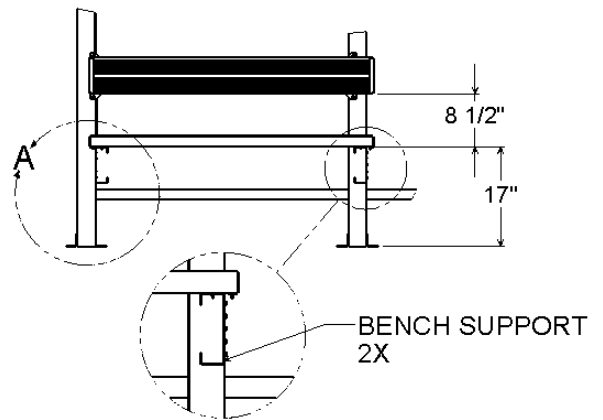


Figure 2

Installation of the bench (cont.)

STEP B.

Place the 9 ½" bench plank on top of the supports. Clamp in place. **See Figure 3.** Drill 3/16" diameter holes through the bench using the predrilled holes in the bench support as a guide, 2 per bench support. **Caution: drill holes through underside flange only.** Secure the bench to the supports with 3/16" diameter pop rivets, 2 per bench support. Remove clamps.

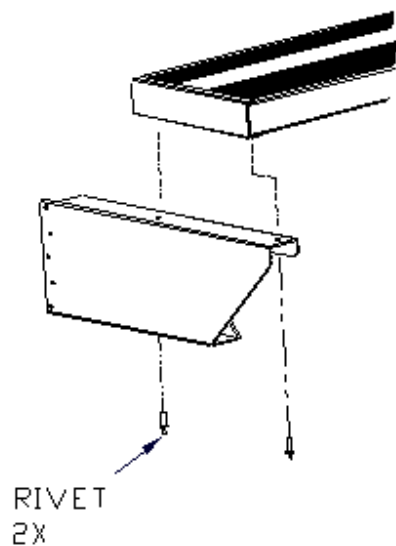


Figure 3

Installation of the bench (cont.)

STEP C.

Lay backrest on its face and layout backrest bracket locations on backrest spaced as shown below to allow attachment to posts. **See Figure 4A.** Clamp in place. Drill 3/16" diameter holes through backrest using predrilled holes in backrest bracket as guide, 2 per backrest bracket. **Caution: drill holes through the rear flange of backrest only.**

See Figure 4B. Secure backrest bracket to backrest with 3/16" pop rivets, 2 per backrest bracket. Remove clamps.

Figure 4A
BACKSIDE OF
BACKREST

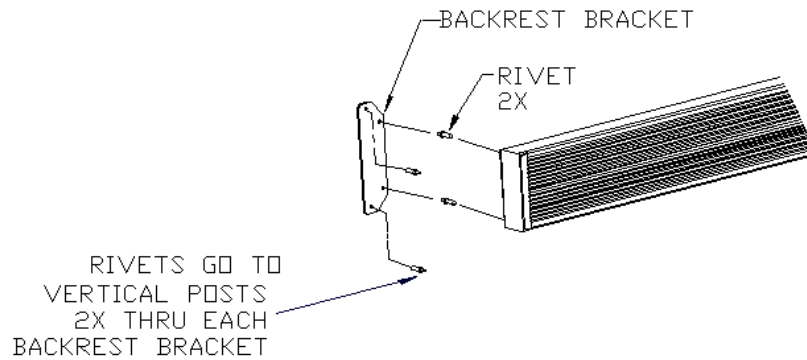
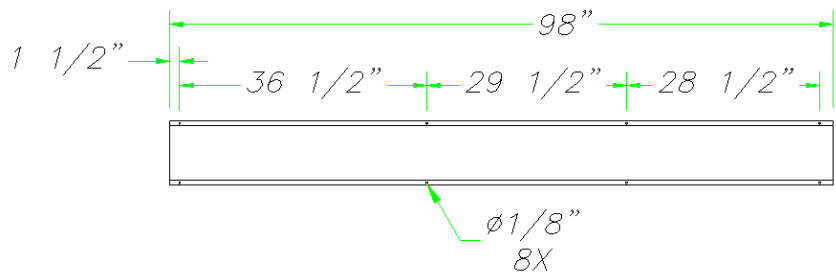


Figure 4B

See orientation of
brackets - Figure 5

Installation of the bench (cont.)

STEP D.

Locate backrest on posts. Backrest must be level. **See Figure 5.** Drill 3/16" diameter holes through posts using predrilled holes in backrest bracket as a guide, 2 per post. Secure backrest brackets to posts with 3/16" pop rivets, 2 per post.

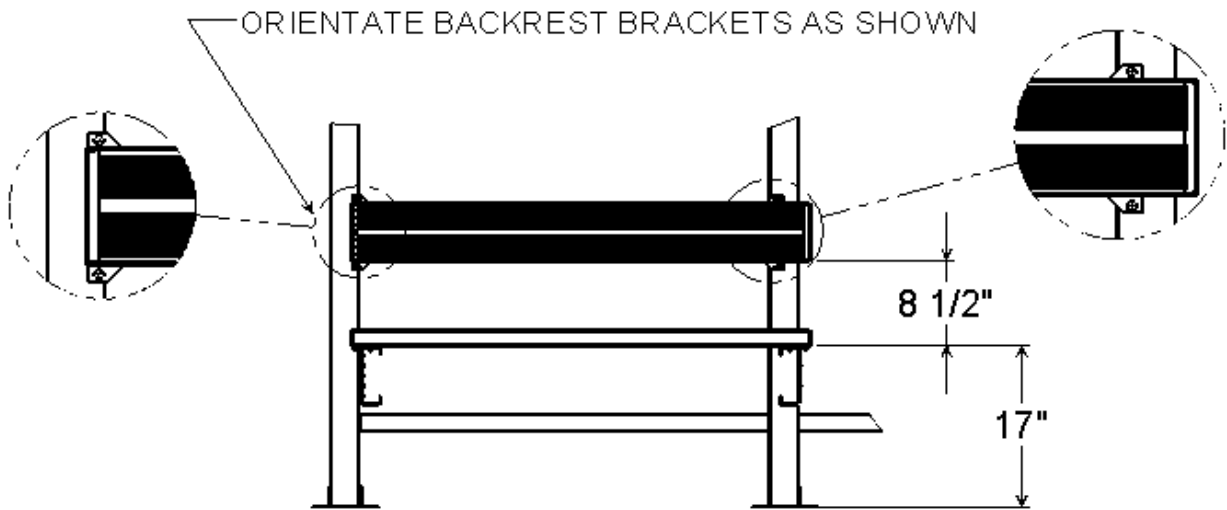


Figure 5

Call our Customer Service
if you need clarification of these assembly instructions.