

GENERAL SHELTER SPECIFICATIONS:

(QTY - 1 SHELTER)

Notice - The Company claims proprietary rights in the information disclosed on this drawing. It is issued in confidence for engineering information only and may not be used, in whole or in part, to manufacture anything whether or not shown hereon, reproduced or disclosed to anyone without direct written permission

- A. GENERAL: Unassembled modular shelter is fabricated from low maintenance, lightweight corrosive resistant aluminum (factory fabricated). Site assembly required.
- 1 DIMENSIONS: 7'-6" wide x 15'-0" long, 97 5/8" nominal exterior height.
- 2 FRAME: Provide structural framing of 6063-T6 aluminum alloy extrusions, members shall have a Quaker Bronze or Clear Anodized finish. Connections shall be fastened internally to framing system using mechanical fasteners. Exposed fasteners on framing system are not acceptable. Standard 7 3/4" ventilation space at bottom of unit.
- 3 ROOF: Constructed using 1/4" white high impact acrylic dome. Roof drains into full perimeter gutter system.
- 4 WINDOWS: Fixed windows are single pane 1/4" minimum clear tempered safety glass, glazed within wall system extrusions and not fastened to exterior wall. Glass sealed with concealed gasket system.
- 5 ANCHORING: Shelter installation requires concrete pad to be 12" minimum larger than shelter in both length and width dimensions. Pad must be level within 1/2" over length and width of structure. Shelter to be anchored to pad using height adjustable aluminum boot and anchored down using 1/4" X 1 7/8" Hilti Kwik HUS-EZ screw anchors.
- 6 BENCH: (Qty-1) Two-Piece Anodized aluminum bench system includes aluminum plank bench, plank backrest, end caps, brackets and hardware. Bench to be installed by others in the field. Bench length allows shelter to be ADA compliant

DESIGN LOADS

WIND LOAD: 90 mph

SNOW LOAD: 20 psf

CERTIFICATION

TITLE: 7'-6" x 15'-0"
ALUMINUM SHELTER

JOB NO:

LOCATION:

MOD NO:

COLOR: QUAKER BRONZE

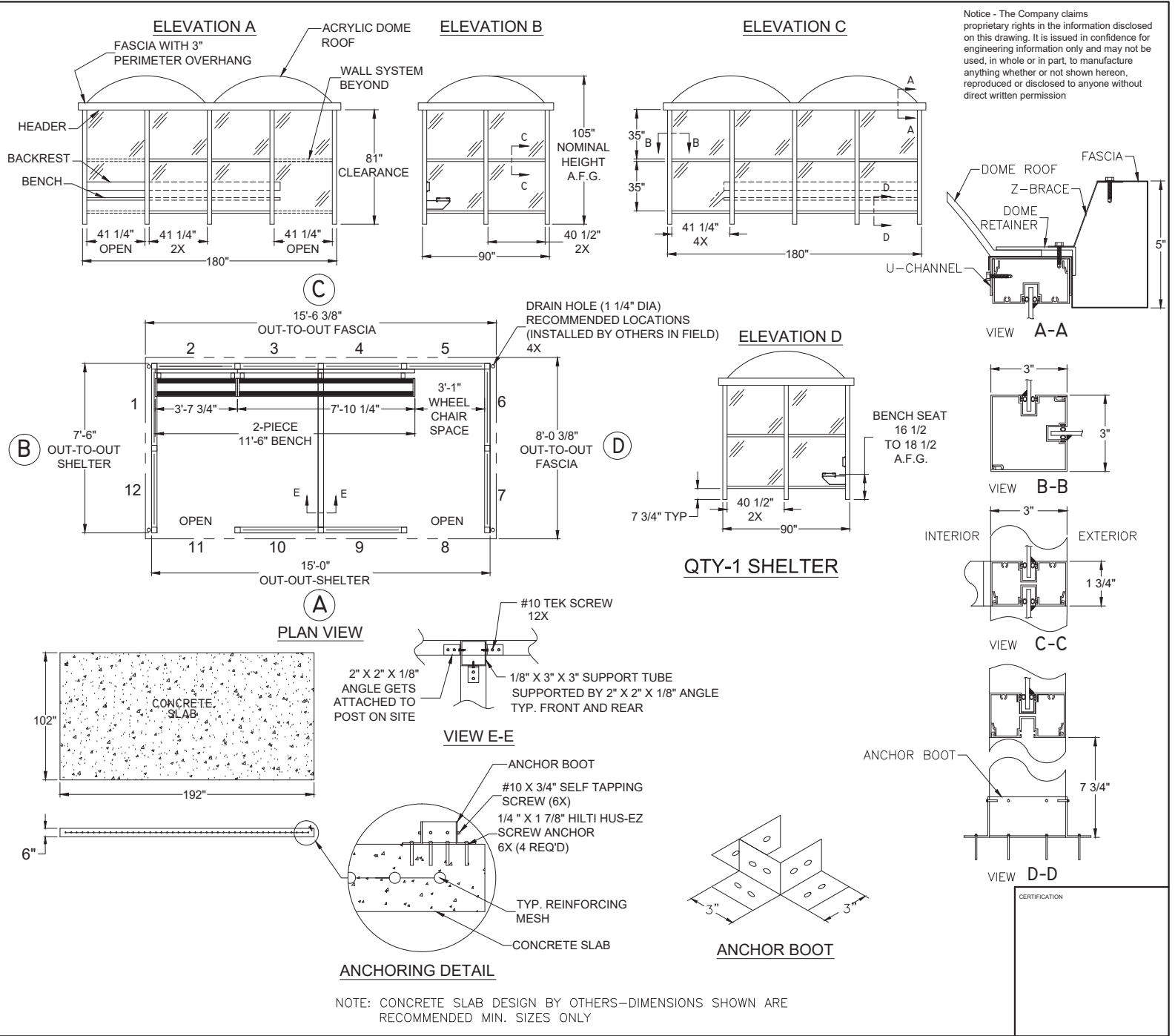
DATE: 08.23.21

DRAWN BY: CDA

APPROVED BY:

SCALE: N.T.S.

SHEET: 1 of 2



Notice - The Company claims proprietary rights in the information disclosed on this drawing. It is issued in confidence for engineering information only and may not be used, in whole or in part, to manufacture anything whether or not shown hereon, reproduced or disclosed to anyone without direct written permission

TITLE:	7'-6" x 15'-0" ALUMINUM SHELTER
JOB NO:	
LOCATION:	
MOD NO:	
COLOR:	QUAKER BRONZE
DATE:	08.23.21
DRAWN BY:	CDA
APPROVED BY:	
SCALE:	N.T.S
SHEET:	2 OF 2