

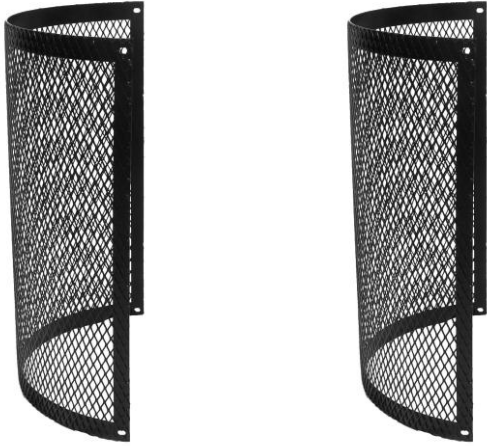
Assembly Instructions

Powder-Coated Metal Waste Receptacle

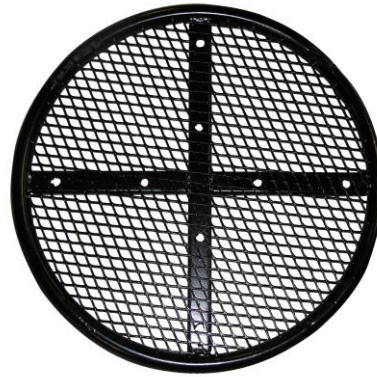


Flat Lid

Before assembly, be sure that all components are included.



A – 2 receptacle halves



B – 1 receptacle base



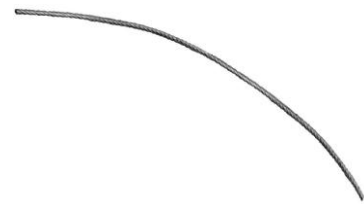
C – 1 liner



D – flat lid



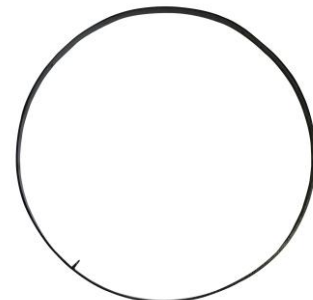
E – 2 cable clips



F – 1 cable

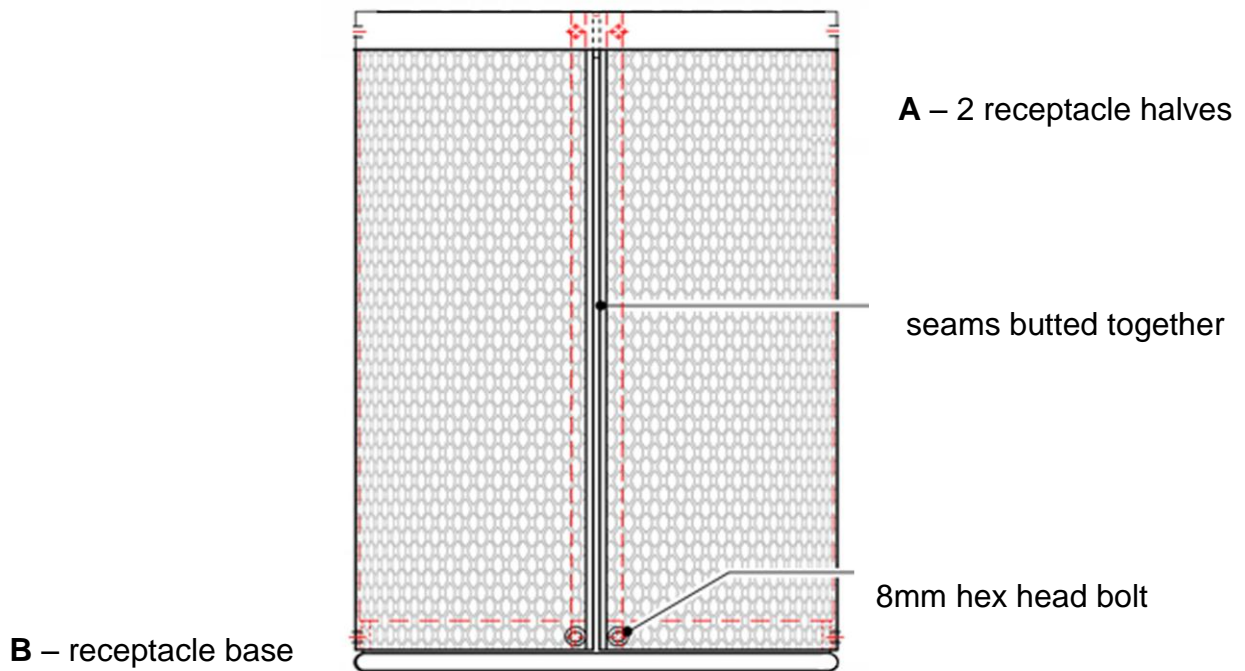


12 – 8mm hex head bolts



G – connector ring

Tools needed: 1 – Allen wrench (provided), 1 - heavy duty pliers



- Step 1:** Place the receptacle base (B), on firm flat surface with the flange side up. Position each of the receptacle basket halves (A), around the outside of the receptacle base flanges to form a complete basket. Line up the pre-drilled holes. Insert a bolt into each hole around the bottom to secure the basket to the base. Bolts will thread tightly into the pre-drilled holes, eliminating the need for nuts.
- Step 2:** Place the connector ring (G) inside the top of the basket, aligning the holes at the top of the basket. Insert one bolt into each of the holes to secure the receptacle basket. Insert the liner.
- Step 3:** Secure the lid to the waste receptacle. Insert one end of the cable (F), into one side of a cable clip (E). Loop that same end of the cable through the cable loop ring at the top of the receptacle and back into the other side of the same cable clip, connecting it to the receptacle. Use pliers to secure. Insert the other end of the cable through the remaining cable clip (E), then through the cable loop ring on the flat lid (D) and back into the other side of that cable clip, connecting the lid to the receptacle. Use pliers to secure.
- Step 4:** Place the flat lid (D) on the waste receptacle.