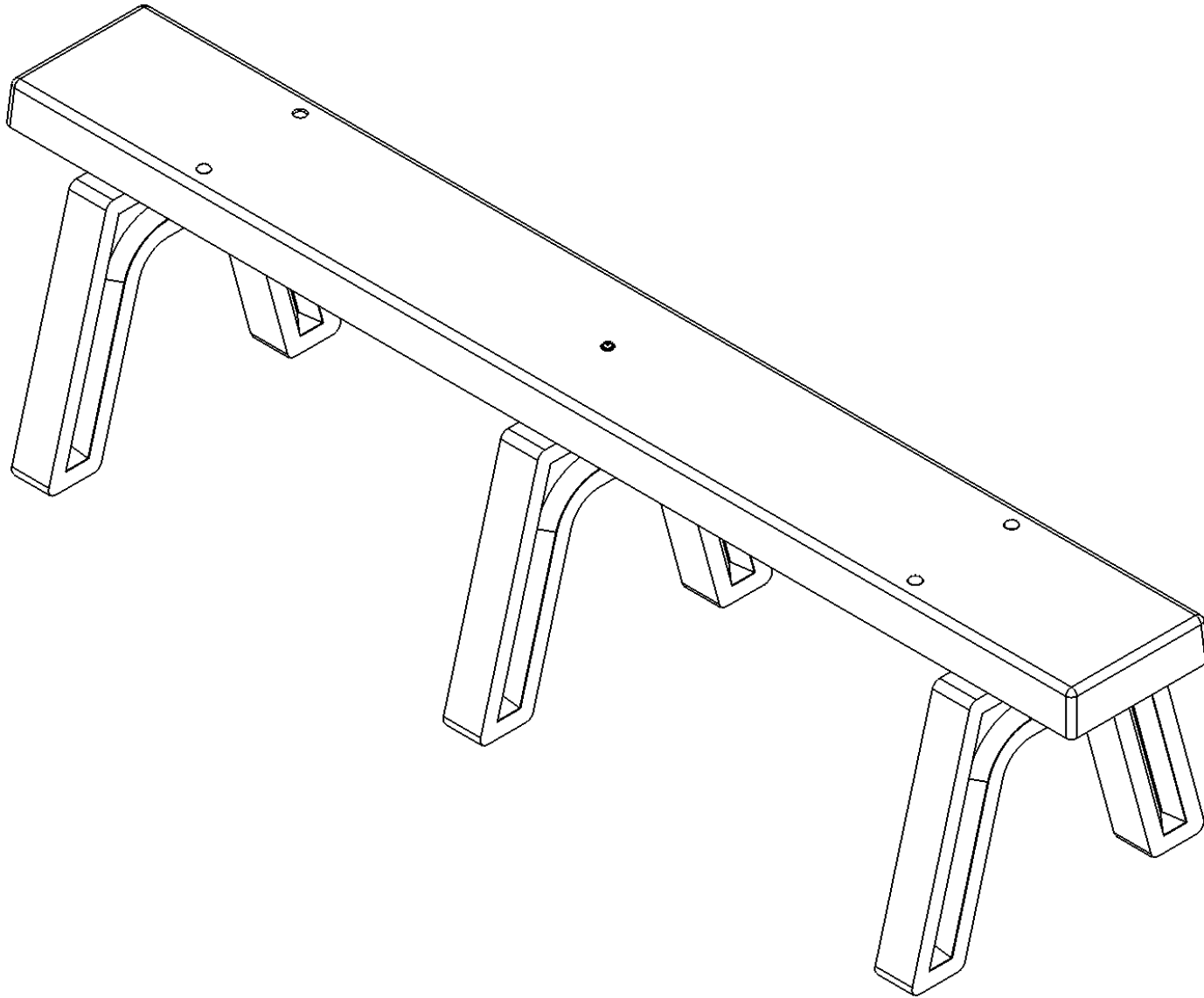


BENCH INSTRUCTIONS

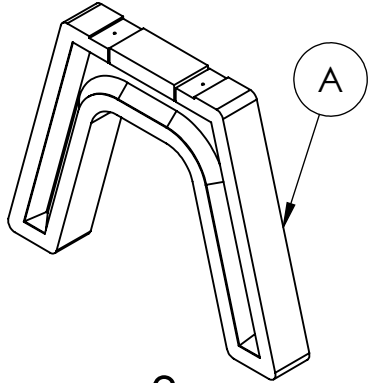
BC1640

REV# 1

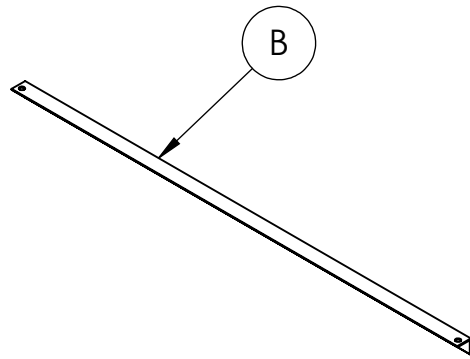


BENCH INSTRUCTIONS

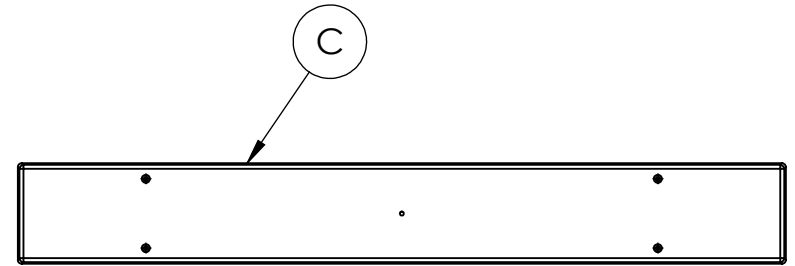
BC1640



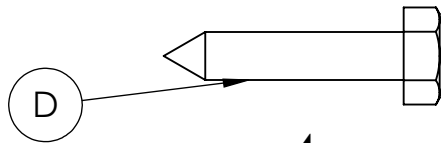
3
Bench ends



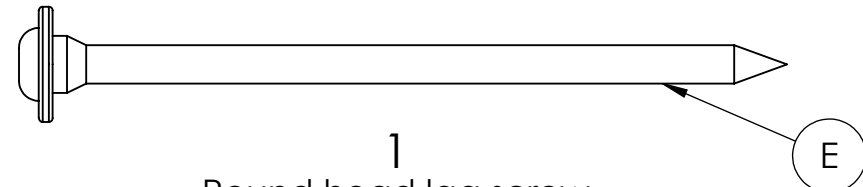
2
Seat support brace



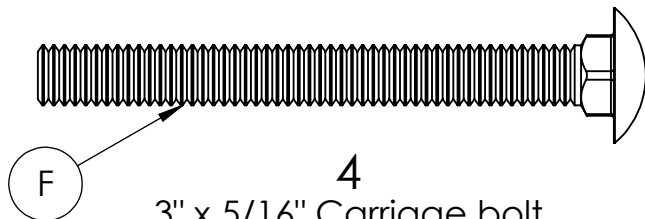
1
Plastic board



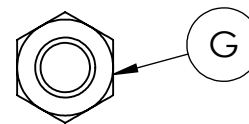
4
1-1/4" x 1/4" Lag screw



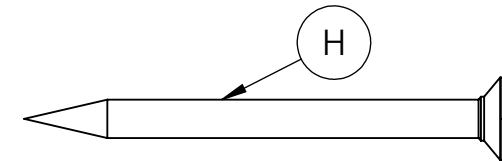
1
Round head lag screw



4
3" x 5/16" Carriage bolt



4
5/16" Hex nut



2
#12 X 2-1/2" Flat head screw

REQUIRED TOOLS (NOT INCLUDED)

- 1 - T-30 TORX BIT
- 1 - #2 PHILLIPS BIT
- 1 - POWER DRILL
- 1 - 1/8" DRILL BIT

NOTE: IT IS IMPORTANT TO KEEP ALL BOLTS FINGER TIGHT DURING ASSEMBLY UNTIL ENTIRE TABLE IS ASSEMBLED

**HARDWARE &
TOOLS REQUIRED
FOR ASSEMBLY**

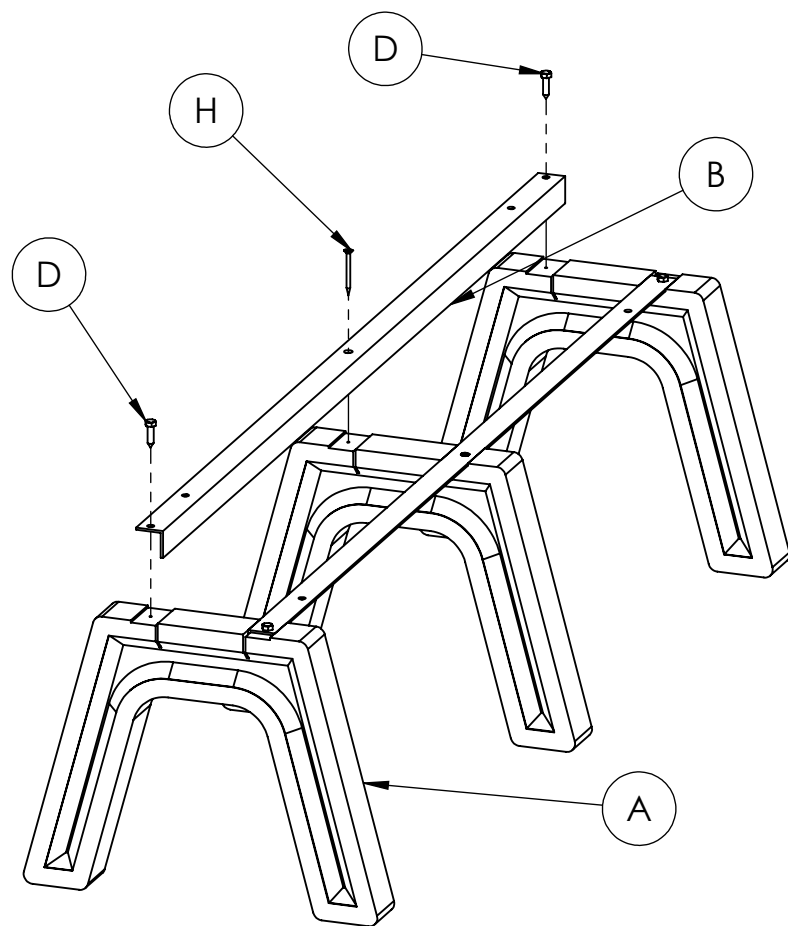
2/4

BENCH INSTRUCTIONS

BC1640

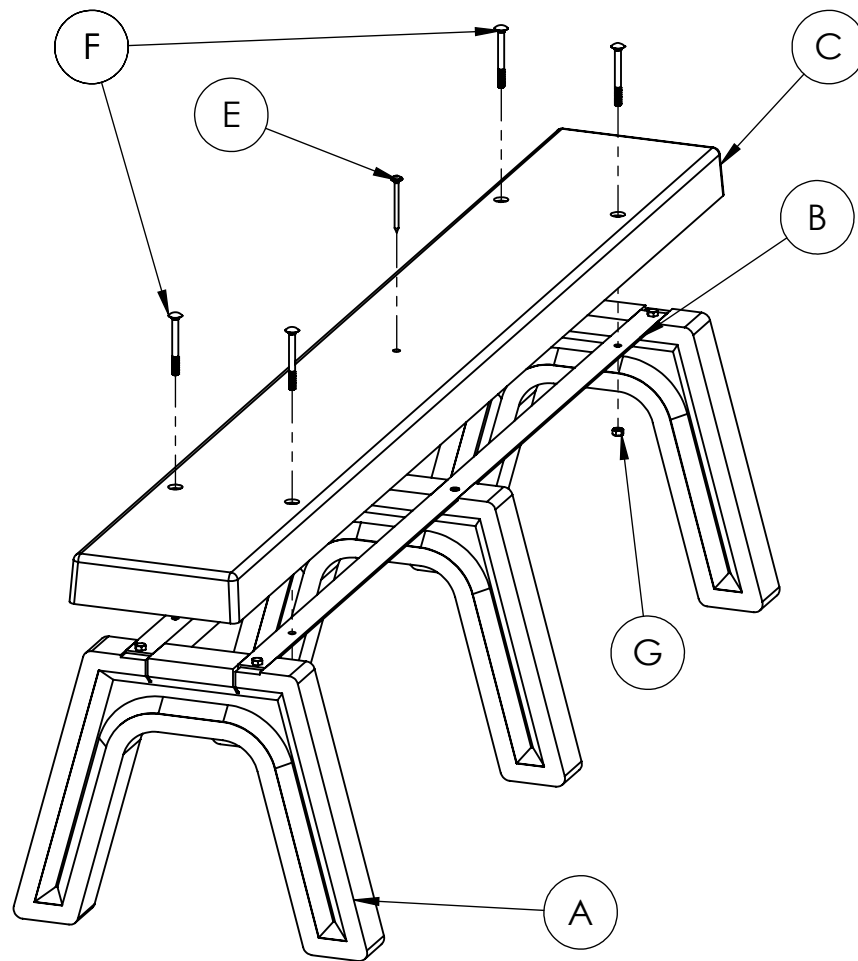
STEP 1

- Stand the plastic bench ends (A) upright
- Place the support braces (B) into the plastic bench ends (A) as shown
- Make sure to align the holes of the support braces with the hole in the plastic bench end
- Secure with 1-1/4" x 1/4" lag screws (D) in the outer bench ends
- In the center bench end (A), secure with (2) #12 x 2-1/2" flat head screws (H)

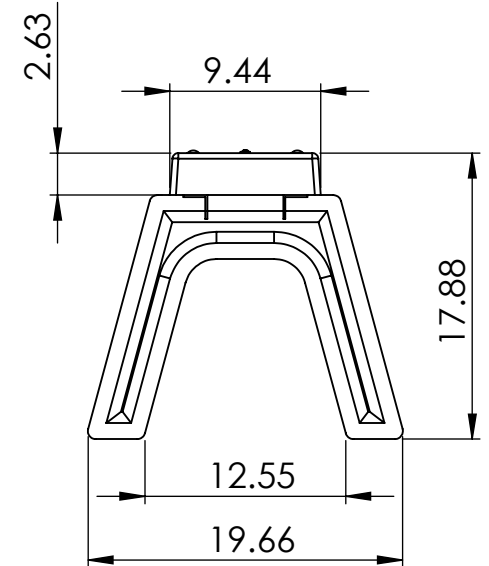
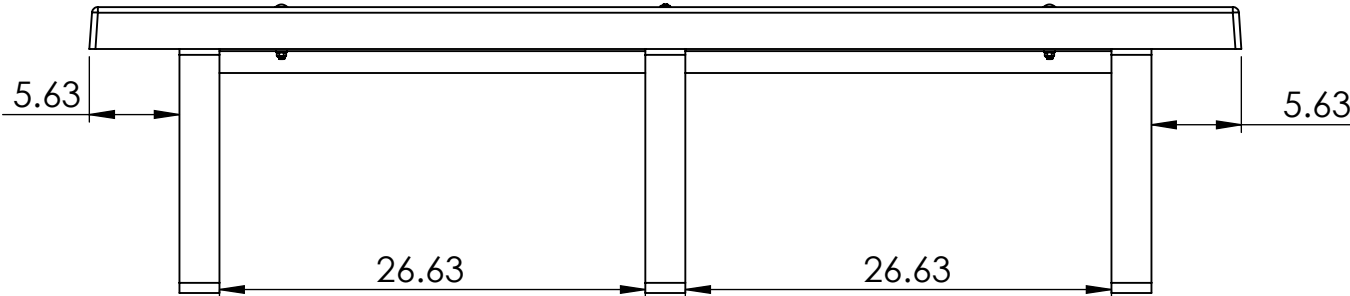
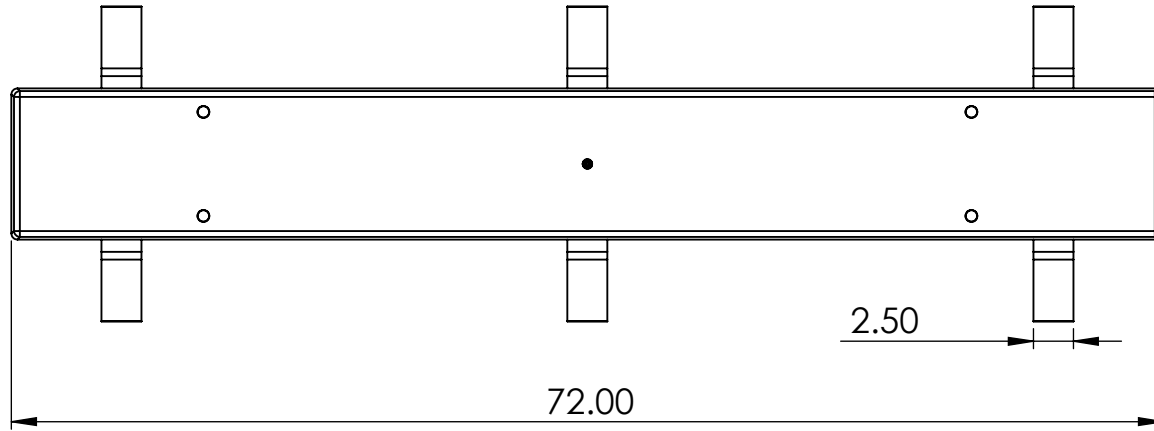
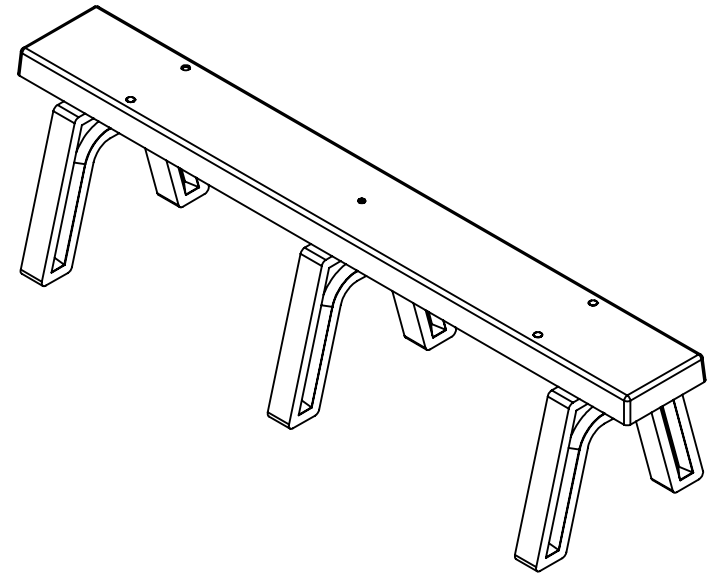


Step 2

- Place a plastic board (C) over the plastic end supports (A)
- Align the holes of the plastic board (C) with the holes in the support braces (B)
- Secure with (4) 3" x 5/16" carriage bolts (F) and hex nuts (G)
- Secure the center bench end (A) with (1) round head lag screw (E) through the top of plastic board (C)



BENCH SPECIFICATIONS BC1640



CONSTRUCTION MATERIALS:
Plastic
HARDWARE:
Stainless Steel

ALL DIMENSIONS ARE SHOWN IN INCHES