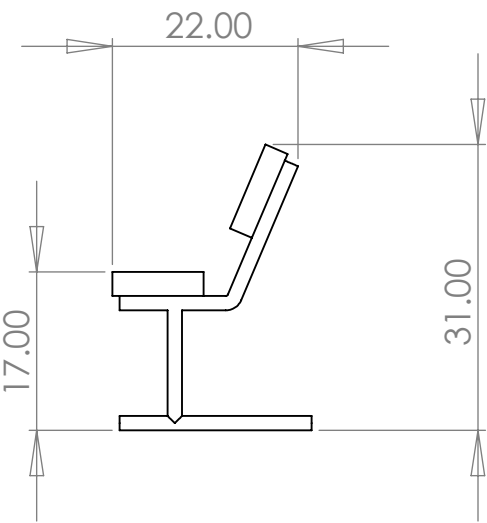
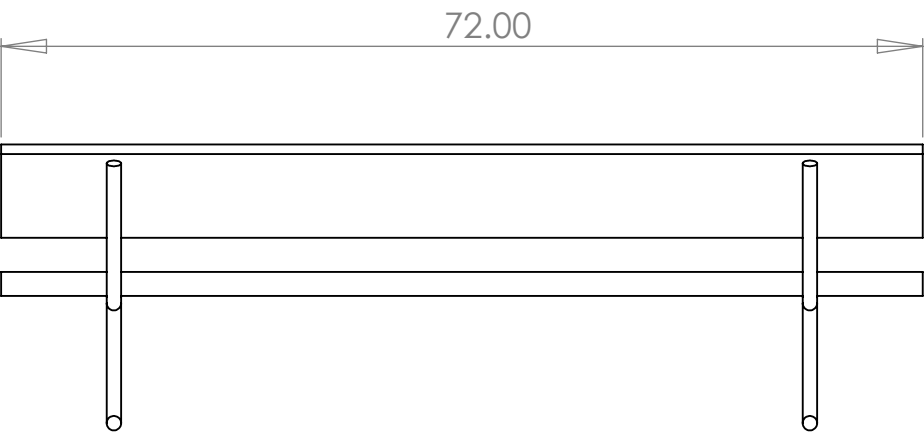


**Specifications**  
6 FT Portable Bench

|                        |                         |
|------------------------|-------------------------|
| End Support Frame..... | 14 Gauge x 1.5” OD Tube |
| Hardware.....          | Zinc                    |
| Frame Finish.....      | Painted                 |
| Frame Weight.....      | 28 lbs                  |
| Board Weight.....      | 28 lbs                  |



# Assembly Instructions

## 6 FT Portable Bench

### Step 1

Attach board to back rest tube using 4-4.5" Carriage Bolts

### Step 2

Attach board to seat support tube using 2-4.5" Carriage Bolts

### Step 3

Attach 48" brace to bottom of seat tubing using 2-4.5" Carriage Bolts. Square all parts and tighten all hardware.

